



Xi-Fastened Assembly Details



15262 Capital Port
San Antonio, TX 78249
1-833-899-0787
facadesxi.com

Date: 4-4-2022

General Notes

Xi-Fastened

The details in this booklet are for not for construction. The designer must edit these details to fit the needs of each specific project and it is the designer's responsibility to determine if the product and details are applicable. The design of the project is the sole responsibility of the project's design professional. See the Xi-Fastened System Specifications for installation and limitations.

For assistance, contact your FACADESXi Technical Department.

Although not a part of the Xterior Insulation System, flashing and sealants are elements of all exterior wall assemblies and must be designed, integrated, and installed, in conjunction with the wall cladding to create an air and water-resistant assembly and a means for drainage of incidental moisture from within the system. FACADESXi is not liable for any errors or omissions in design details, structure capability, attachment details, or shop drawings.

Xi-FASTENED XTERIOR INSULATION SYSTEM

- Ambient/surface temperature must remain above 40°F (4°C) during and until materials are dry, usually 24 hours.
- Select a finish coat color in relation to the overall project location in mind. It is generally recommended to select a finish color with a light reflectance value (LRV) of 20 percent or higher due to the EPS service temperature limitation of approximately 160 degrees F (71 degrees C).
- For use on vertical above-grade walls only or within the allowable slope and waterproof base coats.
- Where snow may occur, increase the distance required between grade and the stucco and increase the slope requirement of the Foam Shapes
- Maintenance is Required with periodic cleaning, and/or recoating to enhance the appearance.
- Always follow product data sheet information.
- All components within the assembly must be compatible with the EIF System materials.
- See Current Evaluation report for allowable Construction Types, Fire Rated, and Non-combustible assemblies: ensure that the system chosen has been tested and is compliant with the necessary tests for these assemblies

NON FACADESXi PRODUCTS

- Non-FACADESXi products are shown for the clarity of the FACADESXi products installation. Their design is by others and are shown for the clarity of the FACADESXi products installation. Installation is not typically the responsibility of the EIFS Installer and should be clarified in pre-construction meetings.
- All claddings, framing, sheathings, and other wall assembly components must comply with the applicable building codes and all claddings, framing, sheathings, and other wall assembly components must comply with the applicable building codes and industry standards.

Xi-Fastened Assembly Overview



Table of Contents

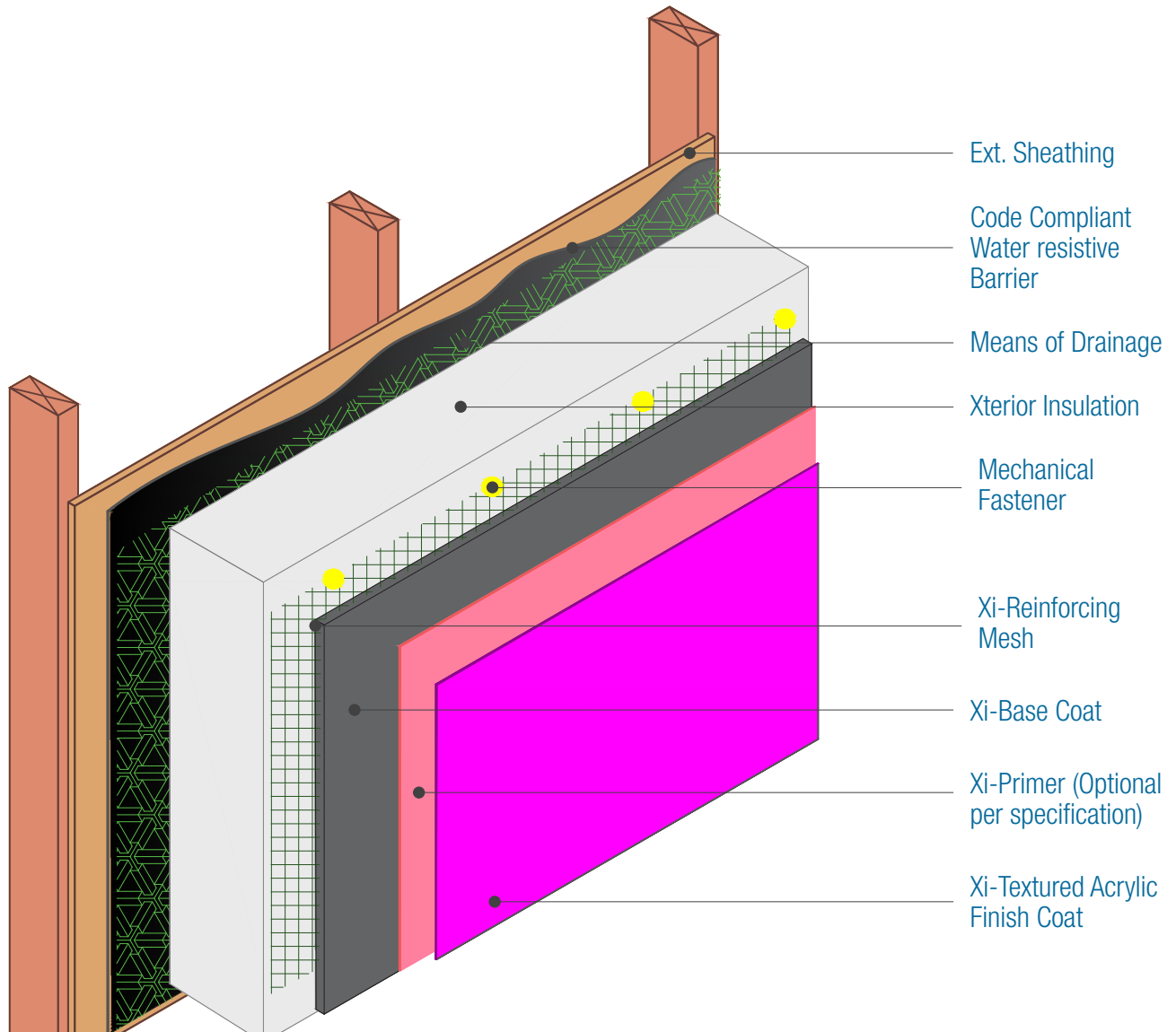
Xi-Fastened Assembly Overview - Isometric	4
Xi-Fastened Assembly Overview	5
Xi-Fastened Assembly Components	6
Xi-Fastened CMU Overview	7
Xi-Fastened Inside and Outside Corner	8
Xi-Fastened Typical Shape and Reveal	9
Xi-Fastened Nail Fin Window Head	10
Xi-Fastened Nail-Fin Window Sill and Jamb	11
Xi-Fastened Expansion Joint at Dissimilar Substrate	12
Xi-Fastened Vertical Expansion Joint	13
Xi-Fastened Expansion Joint at Floorline	14
Xi-Fastened Expansion Joint at Dissimilar Cladding	15
Xi-Fastened Expansion Joint at Inside Corner	16
Xi-Fastened Wall to Soffit	17
Xi-Fastened Fascia to Soffit	18
Xi-Fastened Pipe/Conduit Penetration	19
Xi-Fastened Sign Attachment	20
Xi-Fastened Termination at Grade	21
Xi-Fastened Termination at Balcony	22
Xi-Fastened Saddle Flashing	23
Xi-Fastened Parapet	24
Xi-Fastened Kick Out Flashing	25



15262 Capital Port
San Antonio, TX 78249
1-833-899-0787
facadesxi.com

Xi-Fastened Assembly Overview - Isometric

Date: 06-15-2021 | Detail: XIF.I.1 v1



NOTES:

1. Install products per product datasheets and project specifications.

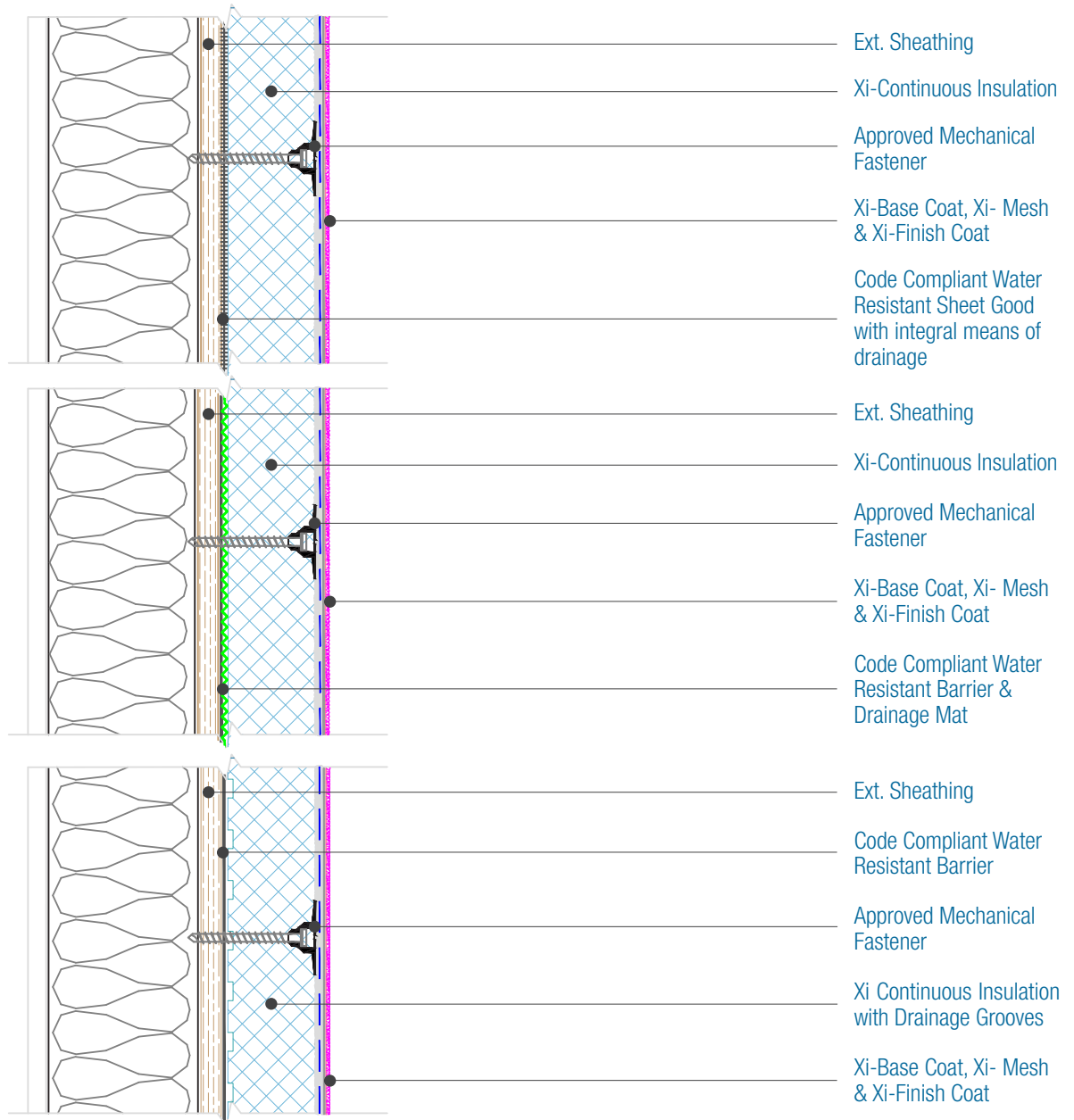
DISCLAIMER: FACADESXI details are recommendations that should be used for guidance only. There may be equivalent means of installation that are not shown in FACADESXI assembly details. All FACADESXI products shall be installed in accordance with FACADESXI product datasheets and all applicable building codes and industry standard practices. The design, engineering and final details incorporating any FACADESXI product are the sole responsibility of the project design professional. FACADESXI is not responsible for determining the acceptability and/or applicability of any FACADESXI product or detail for any specific project or condition. FACADESXI disclaims all liability for improper installation, workmanship, or design by a third-party. EXCEPT FOR ANY EXPRESS REPRESENTATIONS AND WARRANTIES BY FACADESXI, ALL IMPLIED WARRANTIES OF ANY KIND, INCLUDING BUT NOT LIMITED TO WARRANTIES OF MERCHANTABILITY OR FITNESS FOR A PARTICULAR PURPOSE OR COMPLIANCE WITH LAWS OR GOVERNMENT RULES OR REGULATIONS APPLICABLE TO THE PROJECT, ARE HEREBY DISCLAIMED. FACADESXI's website should always be consulted for the latest version of any details and/or product information. Contact FACADESXI for any technical assistance.



15262 Capital Port
 San Antonio, TX 78249
 1-833-899-0787
 facadesxi.com

Xi-Fastened Assembly Overview

Date: 06-15-2021 | Detail: XIF XIF.I.2 v1



NOTES:

1. For full assembly options, materials and placement of materials refer to the specific FACADESXI System specifications.
2. FXI recommends High or Ultra High impact resistance on wall areas subjected to pedestrian traffic or other exposure to impact up, to a minimum height of 6 feet above grade.
3. Location of High Impact Mesh must be shown on the project drawings.

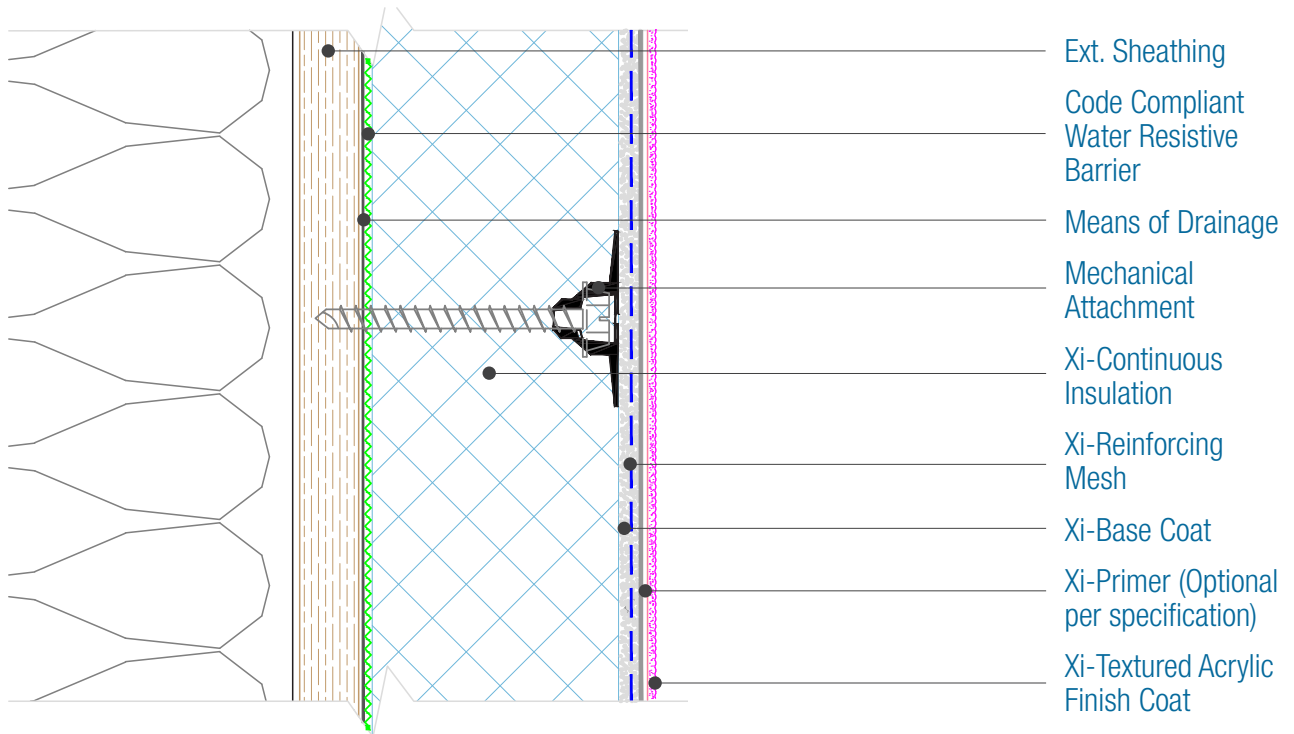
DISCLAIMER: FACADESXI details are recommendations that should be used for guidance only. There may be equivalent means of installation that are not shown in FACADESXI assembly details. All FACADESXI products shall be installed in accordance with FACADESXI product datasheets and all applicable building codes and industry standard practices. The design, engineering and final details incorporating any FACADESXI product are the sole responsibility of the project design professional. FACADESXI is not responsible for determining the acceptability and/or applicability of any FACADESXI product or detail for any specific project or condition. FACADESXI disclaims all liability for improper installation, workmanship, or design by a third-party. EXCEPT FOR ANY EXPRESS REPRESENTATIONS AND WARRANTIES BY FACADESXI, ALL IMPLIED WARRANTIES OF ANY KIND, INCLUDING BUT NOT LIMITED TO WARRANTIES OF MERCHANTABILITY OR FITNESS FOR A PARTICULAR PURPOSE OR COMPLIANCE WITH LAWS OR GOVERNMENT RULES OR REGULATIONS APPLICABLE TO THE PROJECT, ARE HEREBY DISCLAIMED. FACADESXI's website should always be consulted for the latest version of any details and/or product information. Contact FACADESXI for any technical assistance.



15262 Capital Port
 San Antonio, TX 78249
 1-833-899-0787
 facadesxi.com

Xi-Fastened Assembly Components

Date: 06-15-2021 | Detail: XIF.I.3 v1



- Ext. Sheathing
- Code Compliant Water Resistant Barrier
- Means of Drainage
- Mechanical Attachment
- Xi-Continuous Insulation
- Xi-Reinforcing Mesh
- Xi-Base Coat
- Xi-Primer (Optional per specification)
- Xi-Textured Acrylic Finish Coat

Framing

- Wood Metal

Sheathing

- OSB CMU
- Plywood Brick
- Cement Board
- Fiberglass Faced Gypsum

Water Resistant Barrier

- Code Compliant Sheet Good _____

Means of Drainage

- Drainage Mat
- Code Compliant sheet good with integral Drainage
- Grooved Insulation Board

Insulation Board Attachment

- WindLock Wind-Devil2

Base Coat

- Xi-Acrylic Base Coat
- Xi-Dry Acrylic Base Coat

Xi Continuous Insulation

- Expanded Polystyrene
- StyroFoam PanelCore 20

Reinforcement Mesh

- Xi-Mesh Xi-Mesh 6
 - Xi-Mesh 11
 - BearMat 15 BearMat 20
- BearMat Options Not Shown

Primer (Optional per specification)

- Xi-Alkali Resistant Primer

Xi-Textured Acrylic Finish Coat

- Smooth Fine Coarse

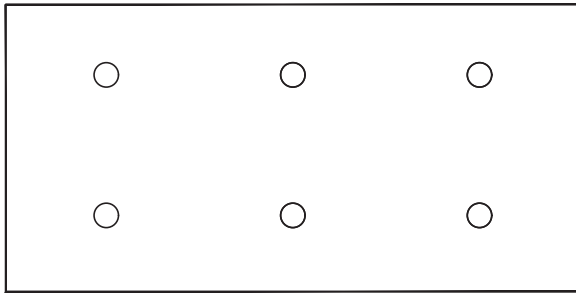
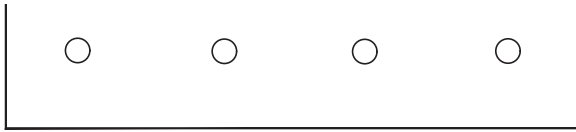
DISCLAIMER: FACADESXi details are recommendations that should be used for guidance only. There may be equivalent means of installation that are not shown in FACADESXi assembly details. All FACADESXi products shall be installed in accordance with FACADESXi product datasheets and all applicable building codes and industry standard practices. The design, engineering and final details incorporating any FACADESXi product are the sole responsibility of the project design professional. FACADESXi is not responsible for determining the acceptability and/or applicability of any FACADESXi product or detail for any specific project or condition. FACADESXi disclaims all liability for improper installation, workmanship, or design by a third-party. EXCEPT FOR ANY EXPRESS REPRESENTATIONS AND WARRANTIES BY FACADESXi, ALL IMPLIED WARRANTIES OF ANY KIND, INCLUDING BUT NOT LIMITED TO WARRANTIES OF MERCHANTABILITY OR FITNESS FOR A PARTICULAR PURPOSE OR COMPLIANCE WITH LAWS OR GOVERNMENT RULES OR REGULATIONS APPLICABLE TO THE PROJECT, ARE HEREBY DISCLAIMED. FACADESXi's website should always be consulted for the latest version of any details and/or product information. Contact FACADESXi for any technical assistance.



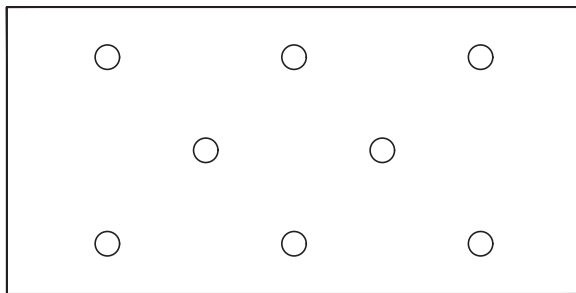
15262 Capital Port
San Antonio, TX 78249
1-833-899-0787
facadesxi.com

Xi-Fastened CMU Overview

Date: 06-15-2021 | Detail: XIF.I.4 v1



Wood/Plywood Sheathing



Gypsum or other sheathing that requires attachment to Framing

Gypsum or other sheathing that requires attachment to Framing

NOTES:

1. Choose screw pattern based upon Wind Load requirements and sheathing type. See current Evaluation Report for maximum wind load allowances.

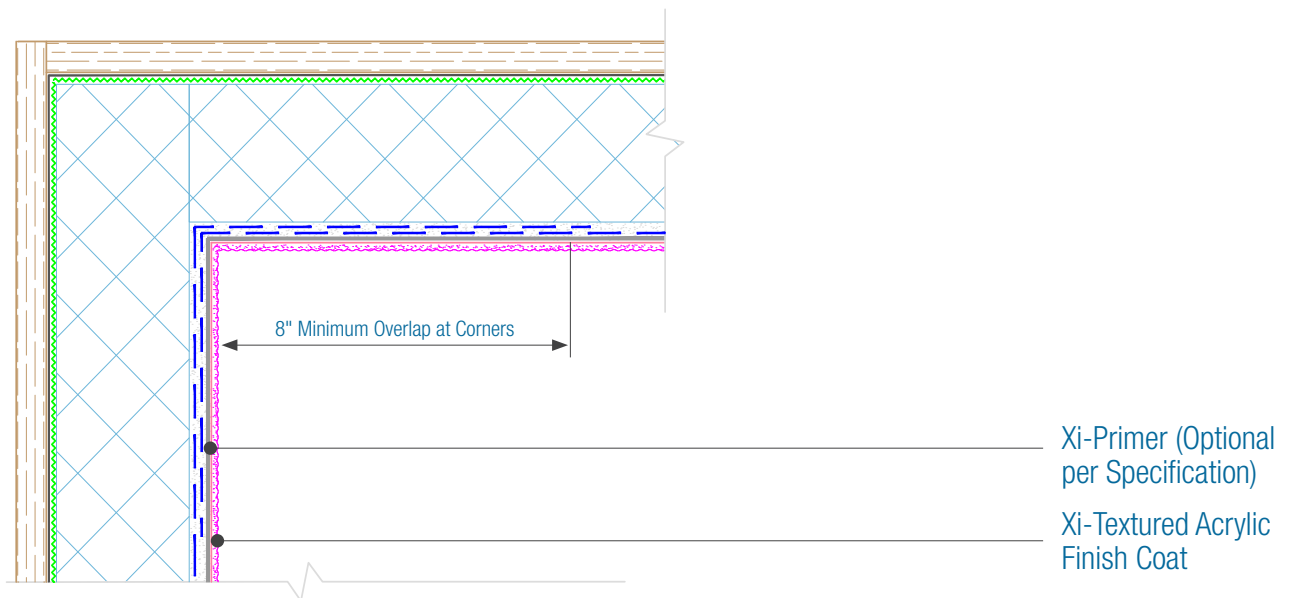
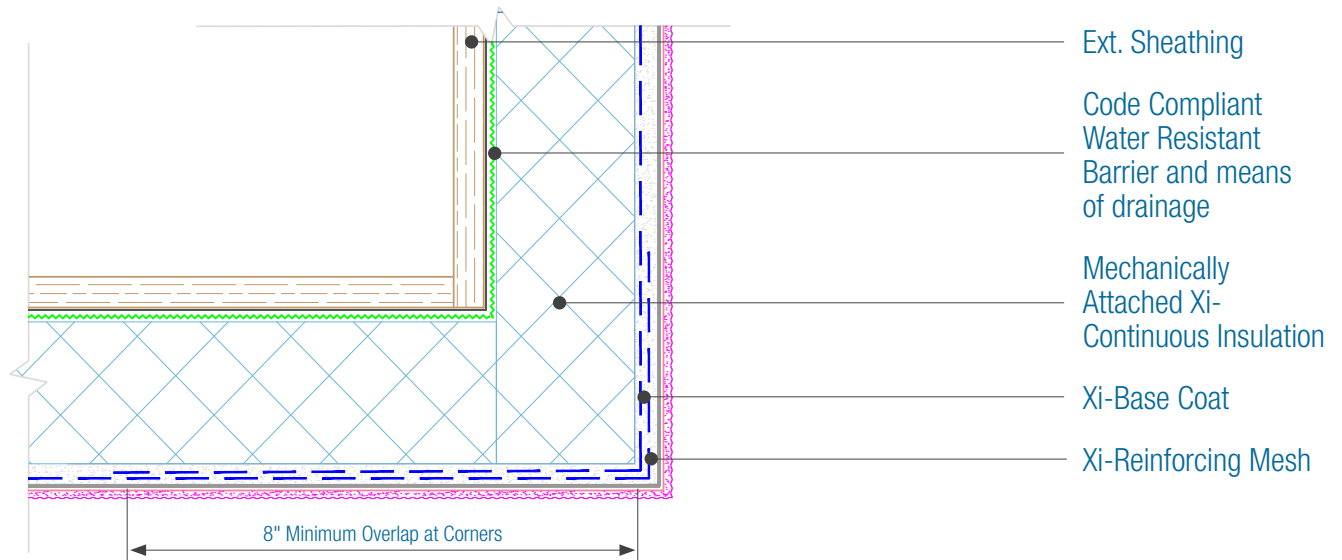
DISCLAIMER: FACADESXI details are recommendations that should be used for guidance only. There may be equivalent means of installation that are not shown in FACADESXI assembly details. All FACADESXI products shall be installed in accordance with FACADESXI product datasheets and all applicable building codes and industry standard practices. The design, engineering and final details incorporating any FACADESXI product are the sole responsibility of the project design professional. FACADESXI is not responsible for determining the acceptability and/or applicability of any FACADESXI product or detail for any specific project or condition. FACADESXI disclaims all liability for improper installation, workmanship, or design by a third-party. EXCEPT FOR ANY EXPRESS REPRESENTATIONS AND WARRANTIES BY FACADESXI, ALL IMPLIED WARRANTIES OF ANY KIND, INCLUDING BUT NOT LIMITED TO WARRANTIES OF MERCHANTABILITY OR FITNESS FOR A PARTICULAR PURPOSE OR COMPLIANCE WITH LAWS OR GOVERNMENT RULES OR REGULATIONS APPLICABLE TO THE PROJECT, ARE HEREBY DISCLAIMED. FACADESXI's website should always be consulted for the latest version of any details and/or product information. Contact FACADESXI for any technical assistance.



15262 Capital Port
 San Antonio, TX 78249
 1-833-899-0787
 facadesxi.com

Xi-Fastened Inside and Outside Corner

Date: 06-15-2021 | Detail: XIF.I.5 v1



NOTES:

1. For full assembly options, materials and placement of materials refer to the specific FACADESXI System specifications.
2. Wrap Xi-Mesh a minimum of 8" around corners.
3. Detail shown for corners without anticipated movement.
4. Double wrap the outside corners with Xi-Mesh or use Corner Mesh.
5. Insulation board edges must be offset at corners.

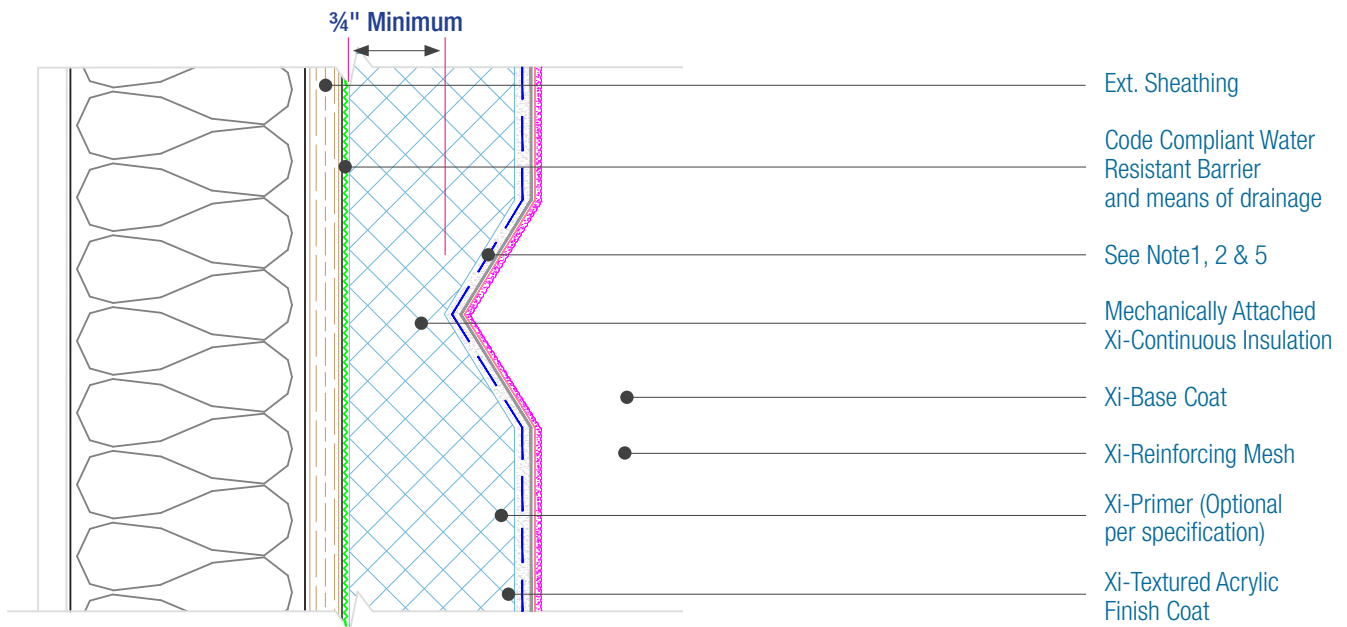
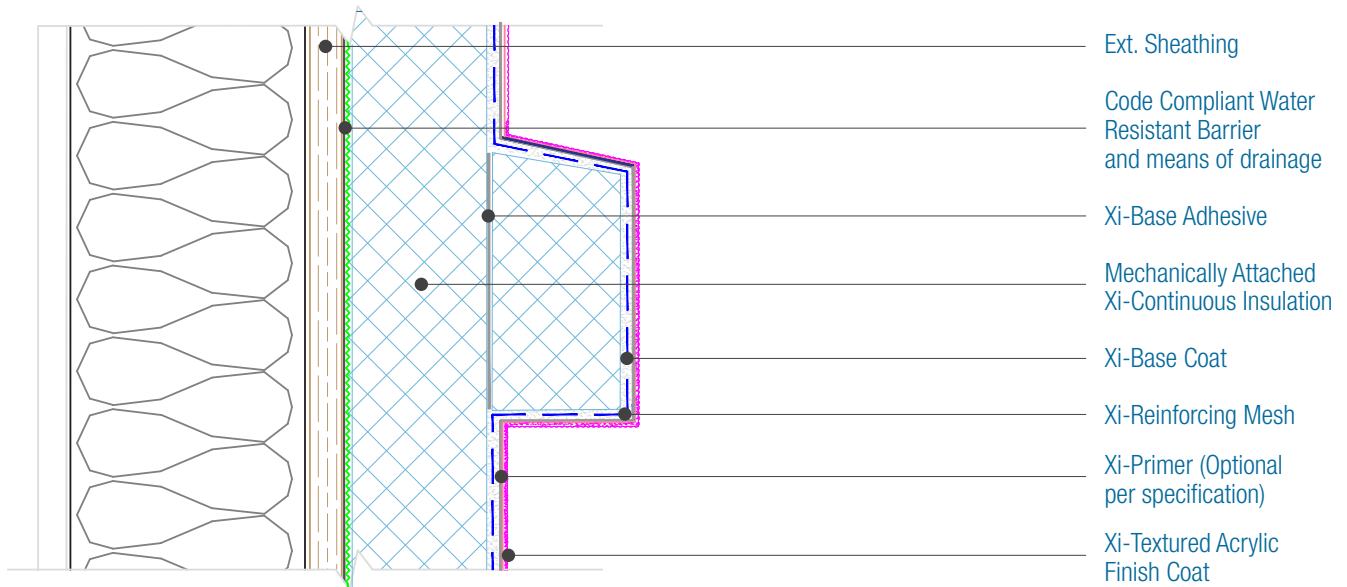
DISCLAIMER: FACADESXI details are recommendations that should be used for guidance only. There may be equivalent means of installation that are not shown in FACADESXI assembly details. All FACADESXI products shall be installed in accordance with FACADESXI product datasheets and all applicable building codes and industry standard practices. The design, engineering and final details incorporating any FACADESXI product are the sole responsibility of the project design professional. FACADESXI is not responsible for determining the acceptability and/or applicability of any FACADESXI product or detail for any specific project or condition. FACADESXI disclaims all liability for improper installation, workmanship, or design by a third-party. EXCEPT FOR ANY EXPRESS REPRESENTATIONS AND WARRANTIES BY FACADESXI, ALL IMPLIED WARRANTIES OF ANY KIND, INCLUDING BUT NOT LIMITED TO WARRANTIES OF MERCHANTABILITY OR FITNESS FOR A PARTICULAR PURPOSE OR COMPLIANCE WITH LAWS OR GOVERNMENT RULES OR REGULATIONS APPLICABLE TO THE PROJECT, ARE HEREBY DISCLAIMED. FACADESXI's website should always be consulted for the latest version of any details and/or product information. Contact FACADESXI for any technical assistance.



15262 Capital Port
 San Antonio, TX 78249
 1-833-899-0787
 facadesxi.com

Xi-Fastened Typical Shape and Reveal

Date: 06-15-2021 | Detail: XIF.I.6 v1



NOTES:

1. 3/4" of flat insulation board must remain after the reveal has been cut into the foam.
2. Do not place reveals where insulation boards abut.
3. Horizontal/Sloped surfaces greater than 2 inches of foam shapes must be coated with Xi-WaterLock
4. Slope Minimums; Standing Snow areas - 6:12, No Standing Snow - 3:12
5. For small reveals, use Xi-Detail Mesh through reveals continuing a minimum of 2 1/2" on each side of the reveal and follow specification instructions.

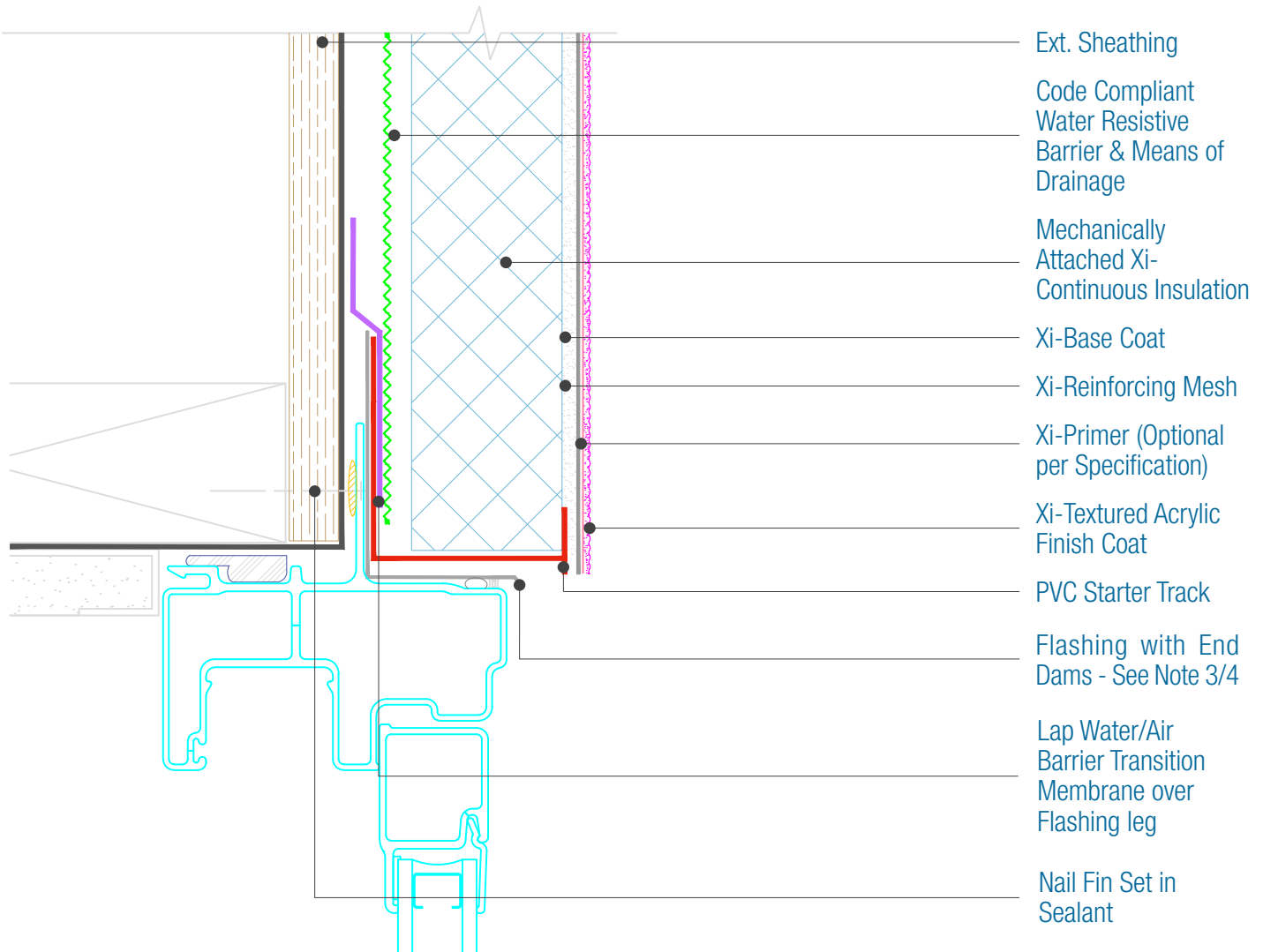
DISCLAIMER: FACADESXI details are recommendations that should be used for guidance only. There may be equivalent means of installation that are not shown in FACADESXI assembly details. All FACADESXI products shall be installed in accordance with FACADESXI product datasheets and all applicable building codes and industry standard practices. The design, engineering and final details incorporating any FACADESXI product are the sole responsibility of the project design professional. FACADESXI is not responsible for determining the acceptability and/or applicability of any FACADESXI product or detail for any specific project or condition. FACADESXI disclaims all liability for improper installation, workmanship, or design by a third-party. EXCEPT FOR ANY EXPRESS REPRESENTATIONS AND WARRANTIES BY FACADESXI, ALL IMPLIED WARRANTIES OF ANY KIND, INCLUDING BUT NOT LIMITED TO WARRANTIES OF MERCHANTABILITY OR FITNESS FOR A PARTICULAR PURPOSE OR COMPLIANCE WITH LAWS OR GOVERNMENT RULES OR REGULATIONS APPLICABLE TO THE PROJECT, ARE HEREBY DISCLAIMED. FACADESXI's website should always be consulted for the latest version of any details and/or product information. Contact FACADESXI for any technical assistance.



15262 Capital Port
San Antonio, TX 78249
1-833-899-0787
facadesxi.com

Xi-Fastened Nail Fin Window Head

Date: 06-15-2021 | Detail: XIF.II.1 v1



NOTES:

1. Drainage must be provided by an acceptable FXI Method. For noncombustible construction, use a pre-wrapped insulation board or contact FXI.
2. Provide seals at all penetrations in accordance with the window manufacturer to ensure airtightness and no water intrusion into the wall.
3. Responsibility of the flashing is not necessarily that of the plastering contractor and should be denoted in the contract documents.
4. Flashing must be installed with end dams and be completely watertight.

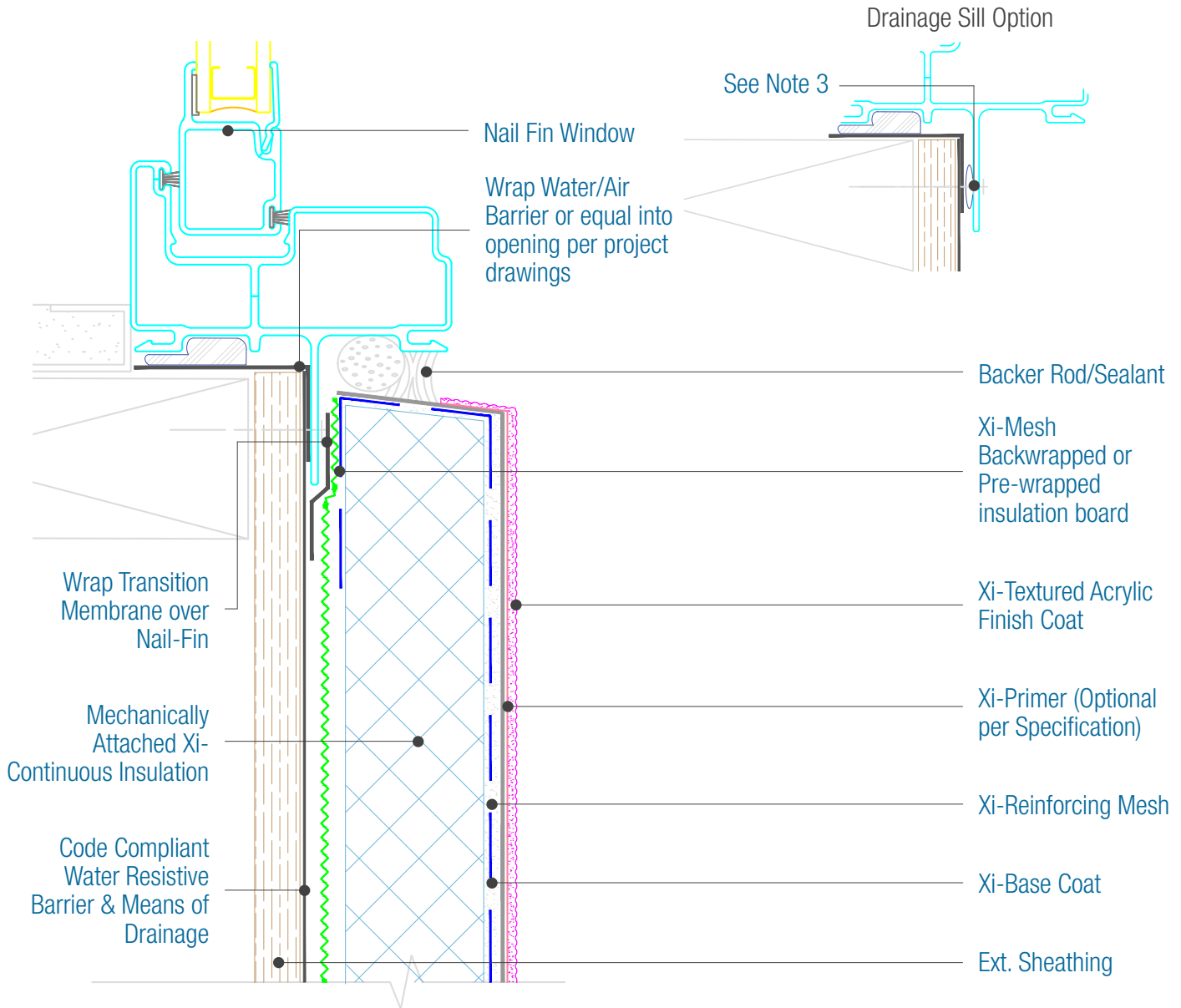
DISCLAIMER: FACADESXI details are recommendations that should be used for guidance only. There may be equivalent means of installation that are not shown in FACADESXI assembly details. All FACADESXI products shall be installed in accordance with FACADESXI product datasheets and all applicable building codes and industry standard practices. The design, engineering and final details incorporating any FACADESXI product are the sole responsibility of the project design professional. FACADESXI is not responsible for determining the acceptability and/or applicability of any FACADESXI product or detail for any specific project or condition. FACADESXI disclaims all liability for improper installation, workmanship, or design by a third-party. EXCEPT FOR ANY EXPRESS REPRESENTATIONS AND WARRANTIES BY FACADESXI, ALL IMPLIED WARRANTIES OF ANY KIND, INCLUDING BUT NOT LIMITED TO WARRANTIES OF MERCHANTABILITY OR FITNESS FOR A PARTICULAR PURPOSE OR COMPLIANCE WITH LAWS OR GOVERNMENT RULES OR REGULATIONS APPLICABLE TO THE PROJECT, ARE HEREBY DISCLAIMED. FACADESXI's website should always be consulted for the latest version of any details and/or product information. Contact FACADESXI for any technical assistance.



15262 Capital Port
 San Antonio, TX 78249
 1-833-899-0787
 facadesxi.com

Xi-Fastened Nail-Fin Window Sill and Jamb

Date: 06-15-2021 | Detail: XIF.II.2 v1



NOTES:

1. There must be continuous airtightness over the entire building enclosure, where required by code. The actual project detail must show this continuity.
2. Provide seals at all penetrations in accordance with the window manufacturer to ensure airtightness and no water intrusion into the wall.
3. At Sill, for a window that will drain behind the fin, spacers should be installed to accommodate drainage and not sealed, use Drainage Sill Option.
4. Responsibility of the flashing is not necessarily that of the plastering contractor and should be denoted in the contract documents.
5. For Rough Opening Protection and options see Water/Air Barrier Manufacturers installation instruction.

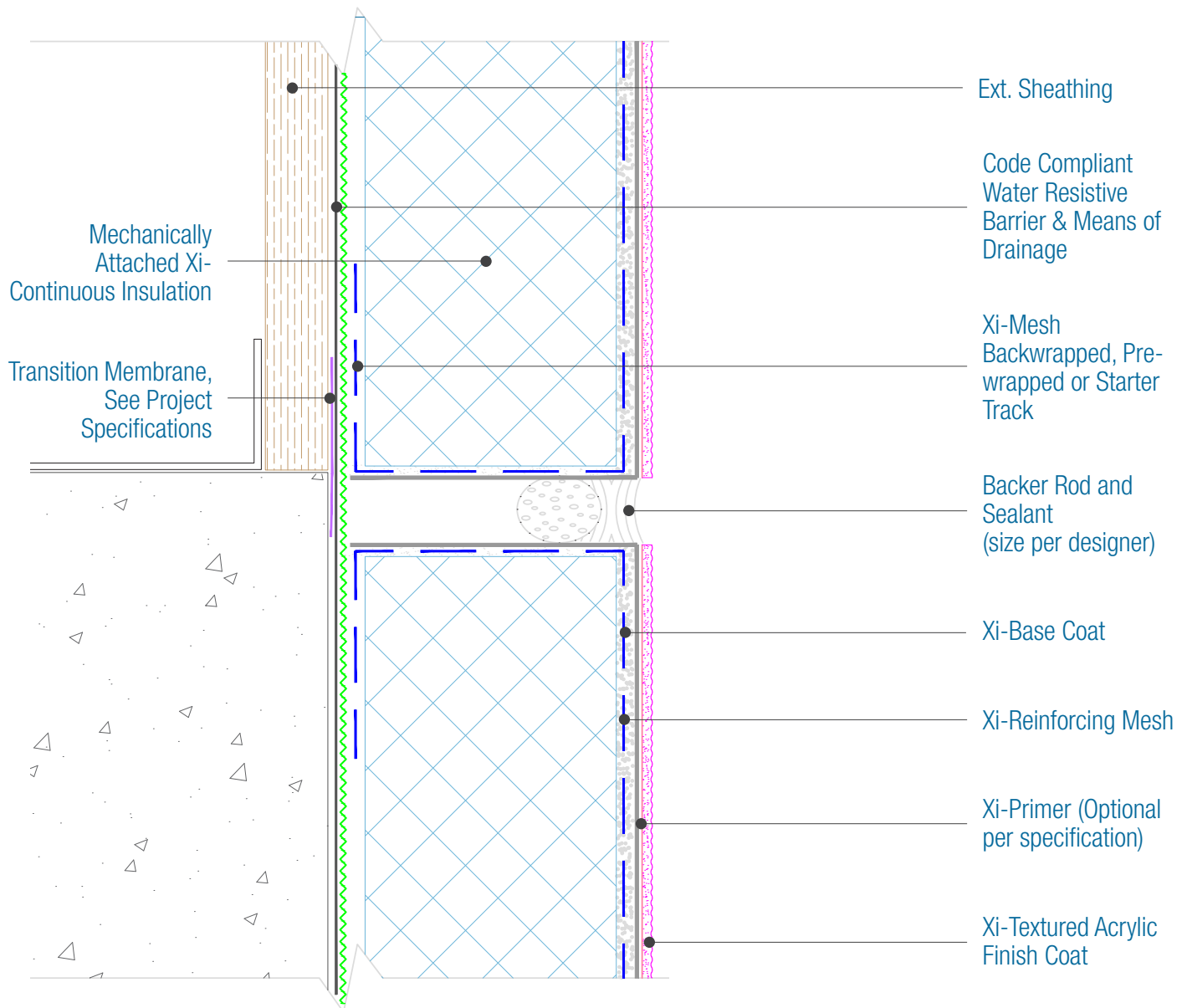
DISCLAIMER: FACADESXI details are recommendations that should be used for guidance only. There may be equivalent means of installation that are not shown in FACADESXI assembly details. All FACADESXI products shall be installed in accordance with FACADESXI product datasheets and all applicable building codes and industry standard practices. The design, engineering and final details incorporating any FACADESXI product are the sole responsibility of the project design professional. FACADESXI is not responsible for determining the acceptability and/or applicability of any FACADESXI product or detail for any specific project or condition. FACADESXI disclaims all liability for improper installation, workmanship, or design by a third-party. EXCEPT FOR ANY EXPRESS REPRESENTATIONS AND WARRANTIES BY FACADESXI, ALL IMPLIED WARRANTIES OF ANY KIND, INCLUDING BUT NOT LIMITED TO WARRANTIES OF MERCHANTABILITY OR FITNESS FOR A PARTICULAR PURPOSE OR COMPLIANCE WITH LAWS OR GOVERNMENT RULES OR REGULATIONS APPLICABLE TO THE PROJECT, ARE HEREBY DISCLAIMED. FACADESXI's website should always be consulted for the latest version of any details and/or product information. Contact FACADESXI for any technical assistance.



15262 Capital Port
San Antonio, TX 78249
1-833-899-0787
facadesxi.com

Xi-Fastened Expansion Joint at Dissimilar Substrate

Date: 06-15-2021 | Detail: XIF.III.1 v1



NOTES:

1. For full assembly options, materials and placement of materials refer to the specific FACADESXI System specifications.
2. Expansion joint placement is the sole responsibility of the design professional and should be installed per the system specifications.
3. For Direct application of EIFS to concrete substrate, see Xterior Insulation Details.
4. See project drawings for locations that required drainage/flushing to the exterior.
5. When applied as a vertical joint, ensure that the backwrap does not embed the drainage of the system.

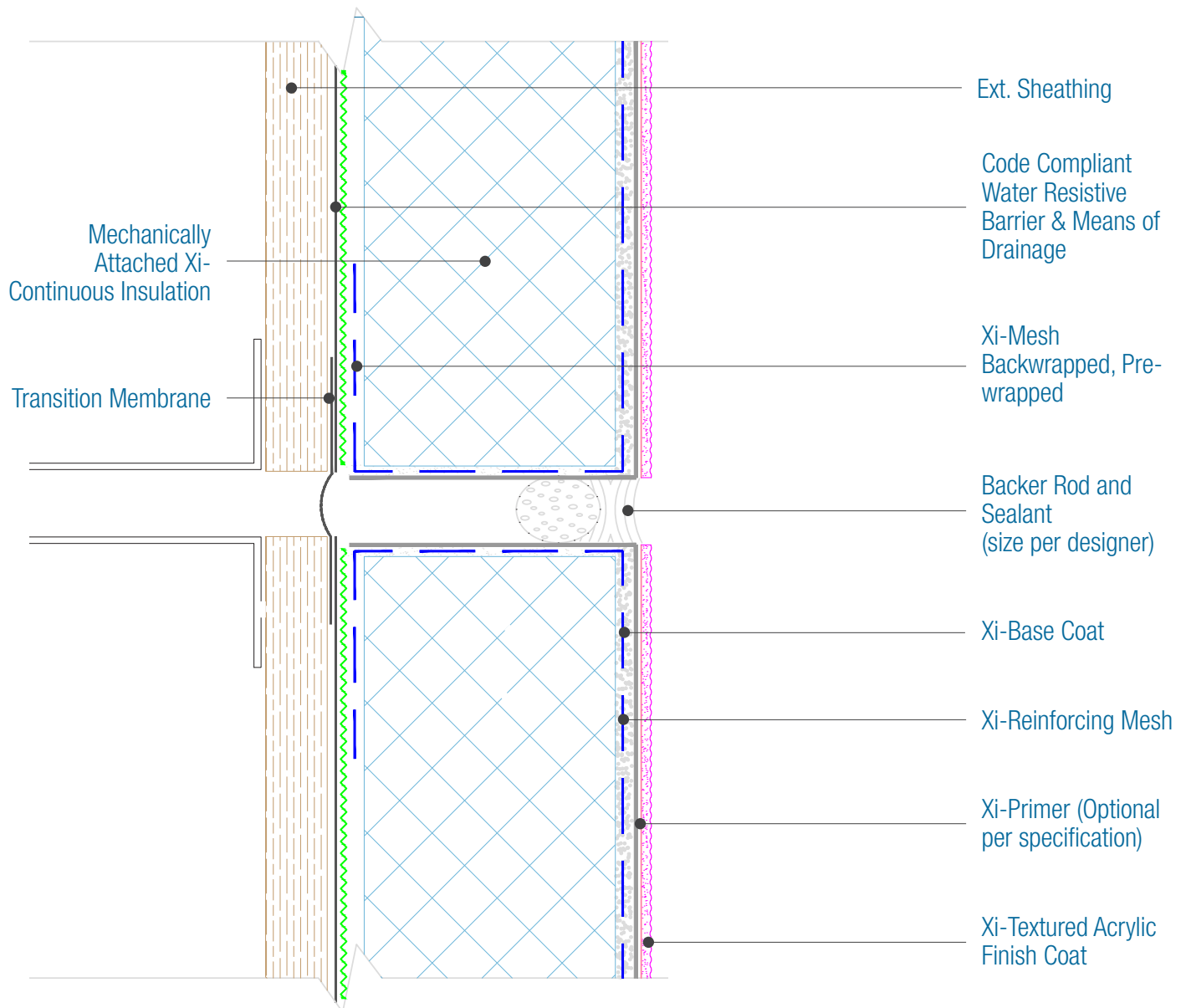
DISCLAIMER: FACADESXI details are recommendations that should be used for guidance only. There may be equivalent means of installation that are not shown in FACADESXI assembly details. All FACADESXI products shall be installed in accordance with FACADESXI product datasheets and all applicable building codes and industry standard practices. The design, engineering and final details incorporating any FACADESXI product are the sole responsibility of the project design professional. FACADESXI is not responsible for determining the acceptability and/or applicability of any FACADESXI product or detail for any specific project or condition. FACADESXI disclaims all liability for improper installation, workmanship, or design by a third-party. EXCEPT FOR ANY EXPRESS REPRESENTATIONS AND WARRANTIES BY FACADESXI, ALL IMPLIED WARRANTIES OF ANY KIND, INCLUDING BUT NOT LIMITED TO WARRANTIES OF MERCHANTABILITY OR FITNESS FOR A PARTICULAR PURPOSE OR COMPLIANCE WITH LAWS OR GOVERNMENT RULES OR REGULATIONS APPLICABLE TO THE PROJECT, ARE HEREBY DISCLAIMED. FACADESXI's website should always be consulted for the latest version of any details and/or product information. Contact FACADESXI for any technical assistance.



15262 Capital Port
San Antonio, TX 78249
1-833-899-0787
facadesxi.com

Xi-Fastened Vertical Expansion Joint

Date: 06-15-2021 | Detail: XIF.III.2 v1



NOTES:

1. For full assembly options, materials and placement of materials refer to the specific FACADESXi System specifications.
2. Ensure that the backwrap does not embed the drainage of the system.
3. Expansion joint placement is the sole responsibility of the design professional and should be installed per the system specifications.

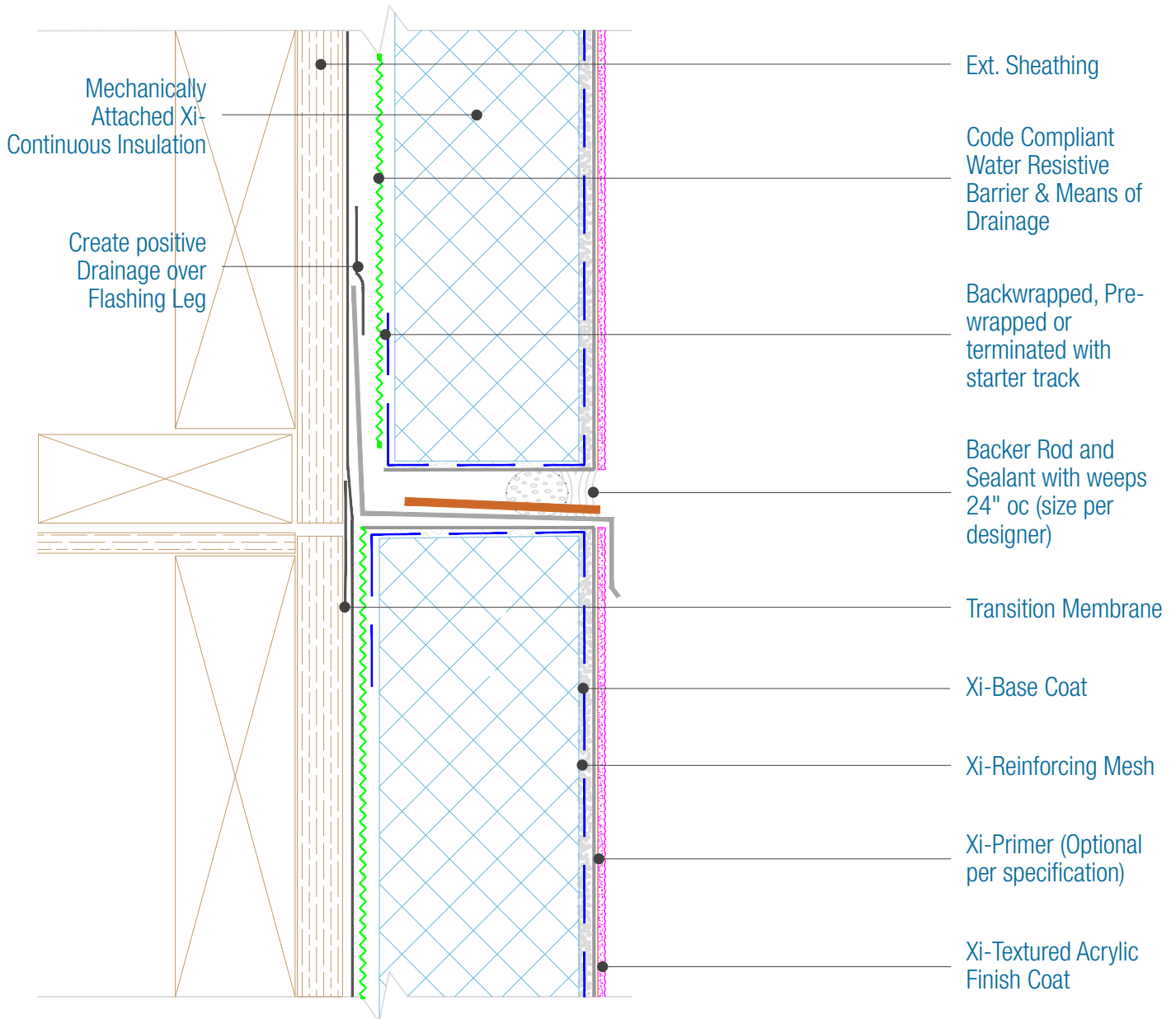
DISCLAIMER: FACADESXi details are recommendations that should be used for guidance only. There may be equivalent means of installation that are not shown in FACADESXi assembly details. All FACADESXi products shall be installed in accordance with FACADESXi product datasheets and all applicable building codes and industry standard practices. The design, engineering and final details incorporating any FACADESXi product are the sole responsibility of the project design professional. FACADESXi is not responsible for determining the acceptability and/or applicability of any FACADESXi product or detail for any specific project or condition. FACADESXi disclaims all liability for improper installation, workmanship, or design by a third-party. EXCEPT FOR ANY EXPRESS REPRESENTATIONS AND WARRANTIES BY FACADESXi, ALL IMPLIED WARRANTIES OF ANY KIND, INCLUDING BUT NOT LIMITED TO WARRANTIES OF MERCHANTABILITY OR FITNESS FOR A PARTICULAR PURPOSE OR COMPLIANCE WITH LAWS OR GOVERNMENT RULES OR REGULATIONS APPLICABLE TO THE PROJECT, ARE HEREBY DISCLAIMED. FACADESXi's website should always be consulted for the latest version of any details and/or product information. Contact FACADESXi for any technical assistance.



15262 Capital Port
 San Antonio, TX 78249
 1-833-899-0787
 facadesxi.com

Xi-Fastened Expansion Joint at Floorline

Date. 06-15-2021 | Detail. XIF.III.3 v1



NOTES:

1. For full assembly options, materials and placement of materials refer to the specific FACADESXi System specifications.
2. See project drawings for locations that required drainage/flushing to the exterior.
3. FXI recommends drainage, at a minimum of every third floor.
4. Expansion joint placement is the sole responsibility of the design professional and should be installed per the system specifications.

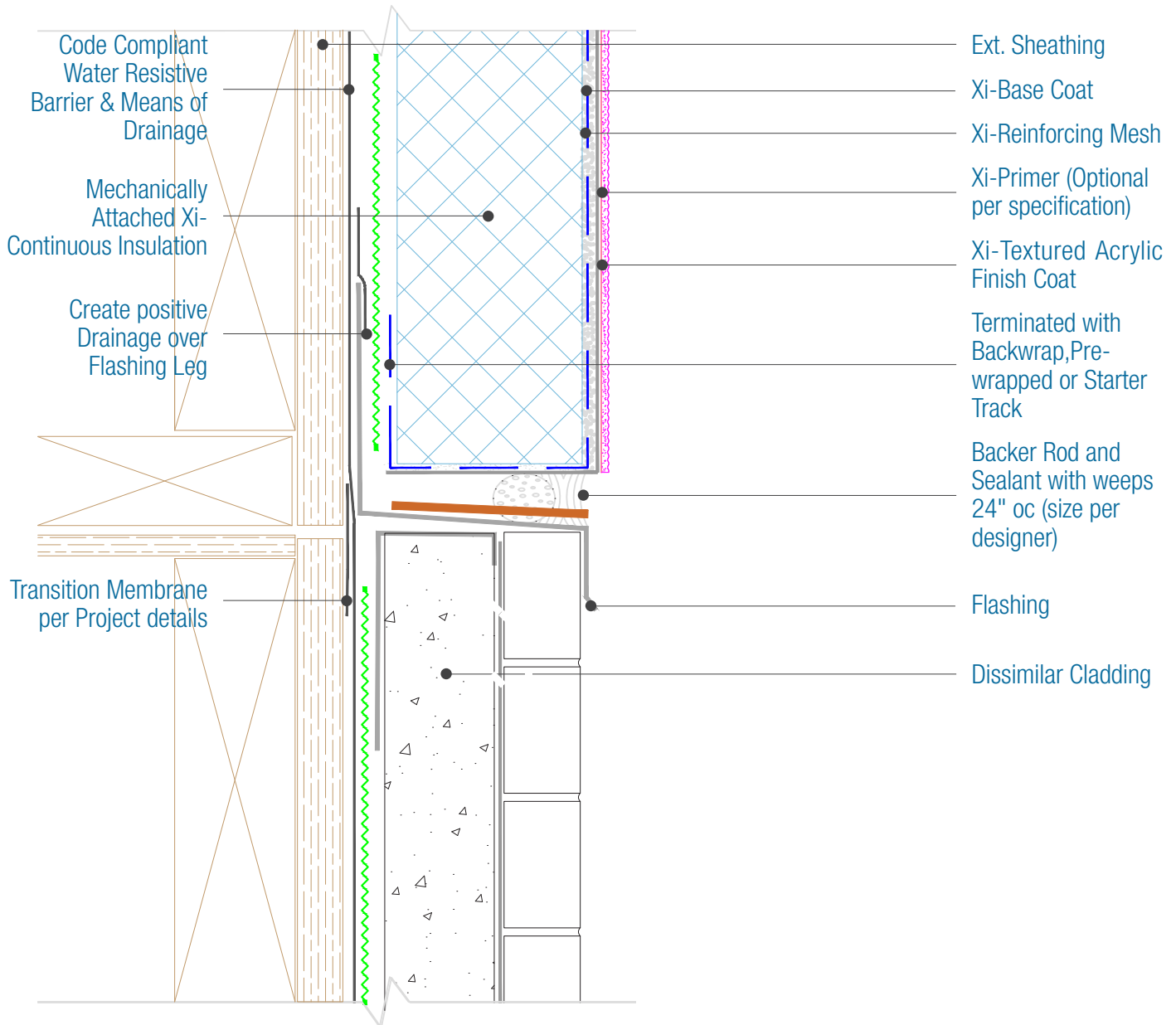
DISCLAIMER: FACADESXi details are recommendations that should be used for guidance only. There may be equivalent means of installation that are not shown in FACADESXi assembly details. All FACADESXi products shall be installed in accordance with FACADESXi product datasheets and all applicable building codes and industry standard practices. The design, engineering and final details incorporating any FACADESXi product are the sole responsibility of the project design professional. FACADESXi is not responsible for determining the acceptability and/or applicability of any FACADESXi product or detail for any specific project or condition. FACADESXi disclaims all liability for improper installation, workmanship, or design by a third-party. EXCEPT FOR ANY EXPRESS REPRESENTATIONS AND WARRANTIES BY FACADESXi, ALL IMPLIED WARRANTIES OF ANY KIND, INCLUDING BUT NOT LIMITED TO WARRANTIES OF MERCHANTABILITY OR FITNESS FOR A PARTICULAR PURPOSE OR COMPLIANCE WITH LAWS OR GOVERNMENT RULES OR REGULATIONS APPLICABLE TO THE PROJECT, ARE HEREBY DISCLAIMED. FACADESXi's website should always be consulted for the latest version of any details and/or product information. Contact FACADESXi for any technical assistance.



15262 Capital Port
 San Antonio, TX 78249
 1-833-899-0787
 facadesxi.com

Xi-Fastened Expansion Joint at Dissimilar Cladding

Date: 06-15-2021 | Detail: XIF.III.4 v1



NOTES:

1. For full assembly options, materials and placement of materials refer to the specific FACADESXI System specifications.
2. A means of drainage must run continuously behind joint.
3. Expansion joint placement is the sole responsibility of the design professional and should be installed per the system specifications.
4. See project drawings for locations that required drainage/flushing to the exterior.
5. FXI recommends drainage, at a minimum of every third floor.

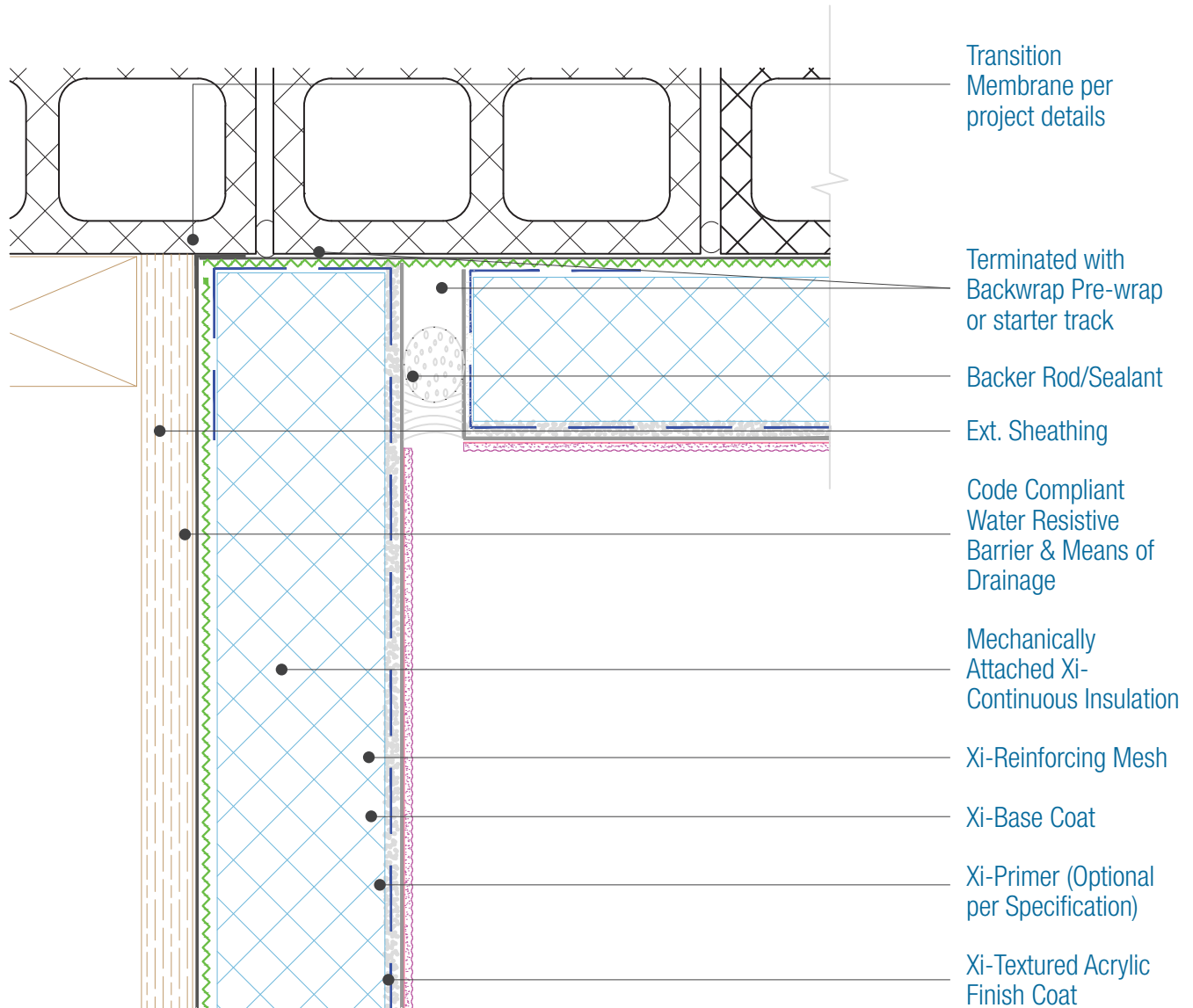
DISCLAIMER: FACADESXI details are recommendations that should be used for guidance only. There may be equivalent means of installation that are not shown in FACADESXI assembly details. All FACADESXI products shall be installed in accordance with FACADESXI product datasheets and all applicable building codes and industry standard practices. The design, engineering and final details incorporating any FACADESXI product are the sole responsibility of the project design professional. FACADESXI is not responsible for determining the acceptability and/or applicability of any FACADESXI product or detail for any specific project or condition. FACADESXI disclaims all liability for improper installation, workmanship, or design by a third-party. EXCEPT FOR ANY EXPRESS REPRESENTATIONS AND WARRANTIES BY FACADESXI, ALL IMPLIED WARRANTIES OF ANY KIND, INCLUDING BUT NOT LIMITED TO WARRANTIES OF MERCHANTABILITY OR FITNESS FOR A PARTICULAR PURPOSE OR COMPLIANCE WITH LAWS OR GOVERNMENT RULES OR REGULATIONS APPLICABLE TO THE PROJECT, ARE HEREBY DISCLAIMED. FACADESXI's website should always be consulted for the latest version of any details and/or product information. Contact FACADESXI for any technical assistance.



15262 Capital Port
San Antonio, TX 78249
1-833-899-0787
facadesxi.com

Xi-Fastened Expansion Joint at Inside Corner

Date: 06-15-2021 | Detail: XIF.III.5 v1



NOTES:

1. For full assembly options, materials and placement of materials refer to the specific FACADESXi System specifications.
2. Expansion joint placement should be installed per the system specifications and is the sole responsibility of the design professional.

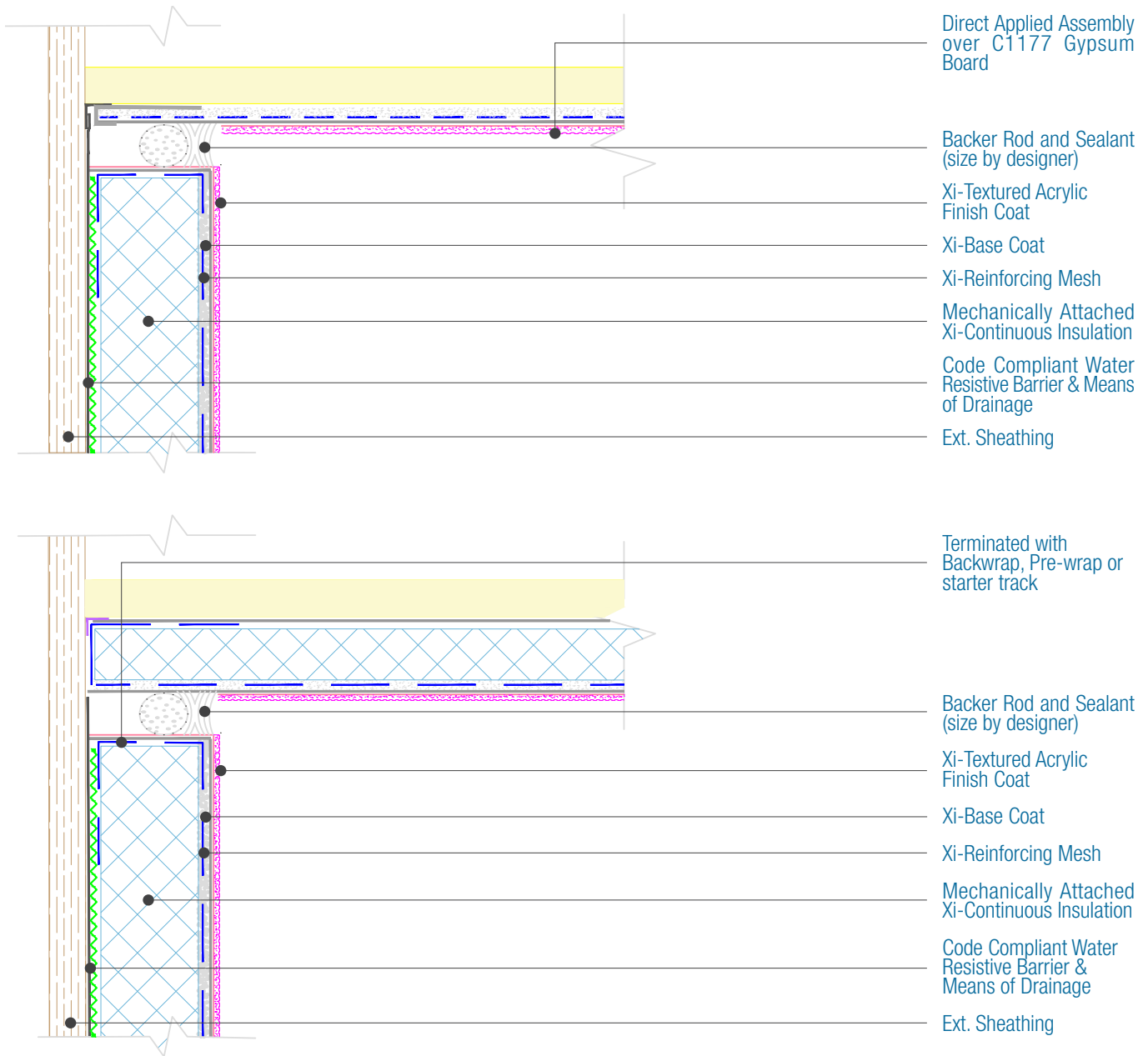
DISCLAIMER: FACADESXi details are recommendations that should be used for guidance only. There may be equivalent means of installation that are not shown in FACADESXi assembly details. All FACADESXi products shall be installed in accordance with FACADESXi product datasheets and all applicable building codes and industry standard practices. The design, engineering and final details incorporating any FACADESXi product are the sole responsibility of the project design professional. FACADESXi is not responsible for determining the acceptability and/or applicability of any FACADESXi product or detail for any specific project or condition. FACADESXi disclaims all liability for improper installation, workmanship, or design by a third-party. EXCEPT FOR ANY EXPRESS REPRESENTATIONS AND WARRANTIES BY FACADESXi, ALL IMPLIED WARRANTIES OF ANY KIND, INCLUDING BUT NOT LIMITED TO WARRANTIES OF MERCHANTABILITY OR FITNESS FOR A PARTICULAR PURPOSE OR COMPLIANCE WITH LAWS OR GOVERNMENT RULES OR REGULATIONS APPLICABLE TO THE PROJECT, ARE HEREBY DISCLAIMED. FACADESXi's website should always be consulted for the latest version of any details and/or product information. Contact FACADESXi for any technical assistance.



15262 Capital Port
 San Antonio, TX 78249
 1-833-899-0787
 facadesxi.com

Xi-Fastened Wall to Soffit

Date. 06-15-2021 | Detail. XIF.IV.1 v1



NOTES:

1. For full assembly options, materials and placement of materials refer to the specific FACADESXI System specifications.
2. Insulation boards on soffits may not be applied in enclosed areas.
3. See DAFS specification for soffit application.
4. A water resistant barrier is not required on non-exposed soffits; however if an air barrier is required, the full system should be installed. The lamina may not be installed directly over WaterShield.

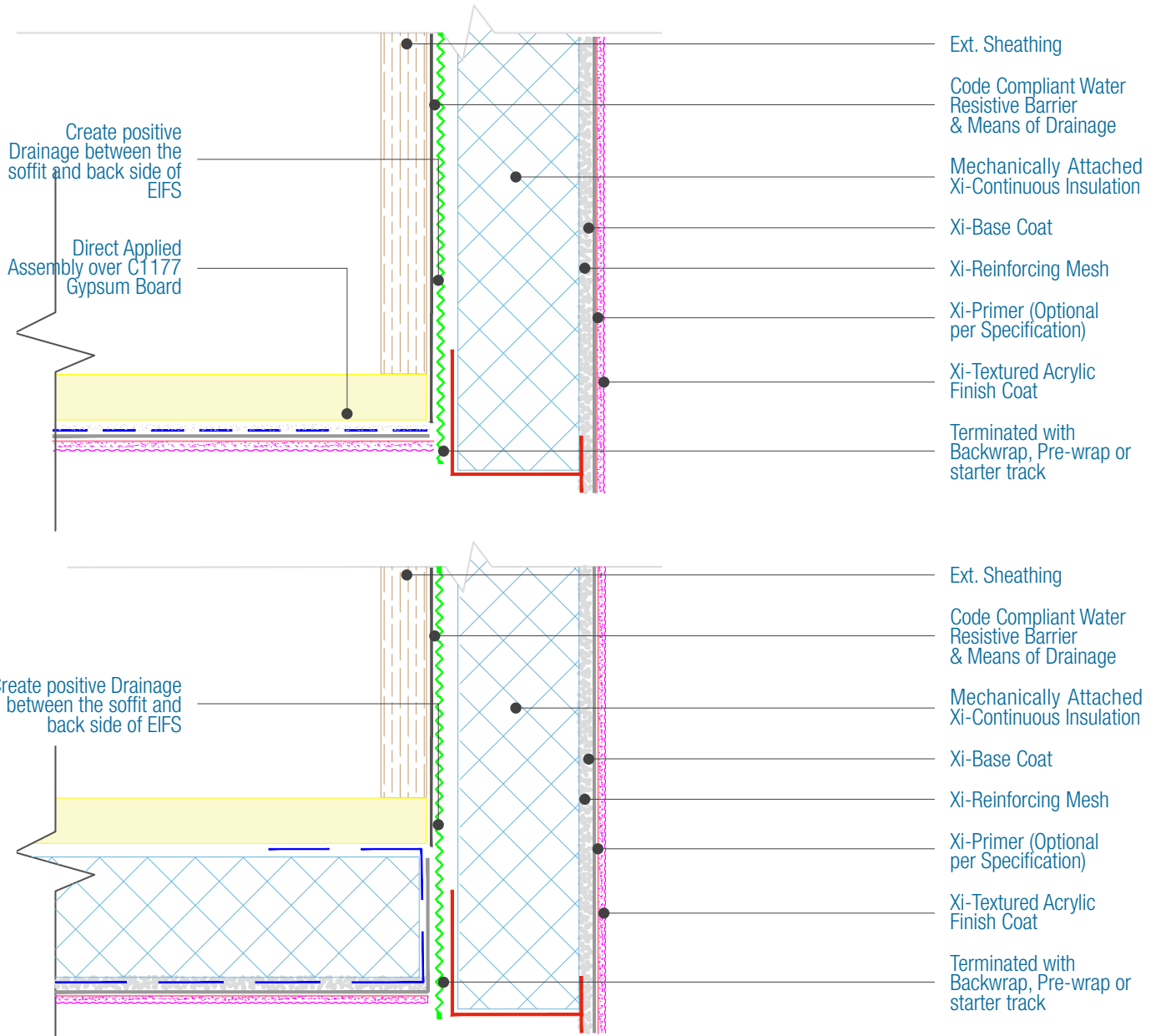
DISCLAIMER: FACADESXI details are recommendations that should be used for guidance only. There may be equivalent means of installation that are not shown in FACADESXI assembly details. All FACADESXI products shall be installed in accordance with FACADESXI product datasheets and all applicable building codes and industry standard practices. The design, engineering and final details incorporating any FACADESXI product are the sole responsibility of the project design professional. FACADESXI is not responsible for determining the acceptability and/or applicability of any FACADESXI product or detail for any specific project or condition. FACADESXI disclaims all liability for improper installation, workmanship, or design by a third-party. EXCEPT FOR ANY EXPRESS REPRESENTATIONS AND WARRANTIES BY FACADESXI, ALL IMPLIED WARRANTIES OF ANY KIND, INCLUDING BUT NOT LIMITED TO WARRANTIES OF MERCHANTABILITY OR FITNESS FOR A PARTICULAR PURPOSE OR COMPLIANCE WITH LAWS OR GOVERNMENT RULES OR REGULATIONS APPLICABLE TO THE PROJECT, ARE HEREBY DISCLAIMED. FACADESXI's website should always be consulted for the latest version of any details and/or product information. Contact FACADESXI for any technical assistance.



15262 Capital Port
 San Antonio, TX 78249
 1-833-899-0787
 facadesxi.com

Xi-Fastened Fascia to Soffit

Date. 06-15-2021 | Detail. XIF.IV.2 v1



NOTES:

1. For full assembly options, materials and placement of materials refer to the specific FACADESXI System specifications.
2. See DAFS specification for soffit application.
3. A water resistant barrier is not required on non-exposed soffits: however if an air barrier is required, the full system should be installed.
4. Non-combustible construction may not use starter track at this location.

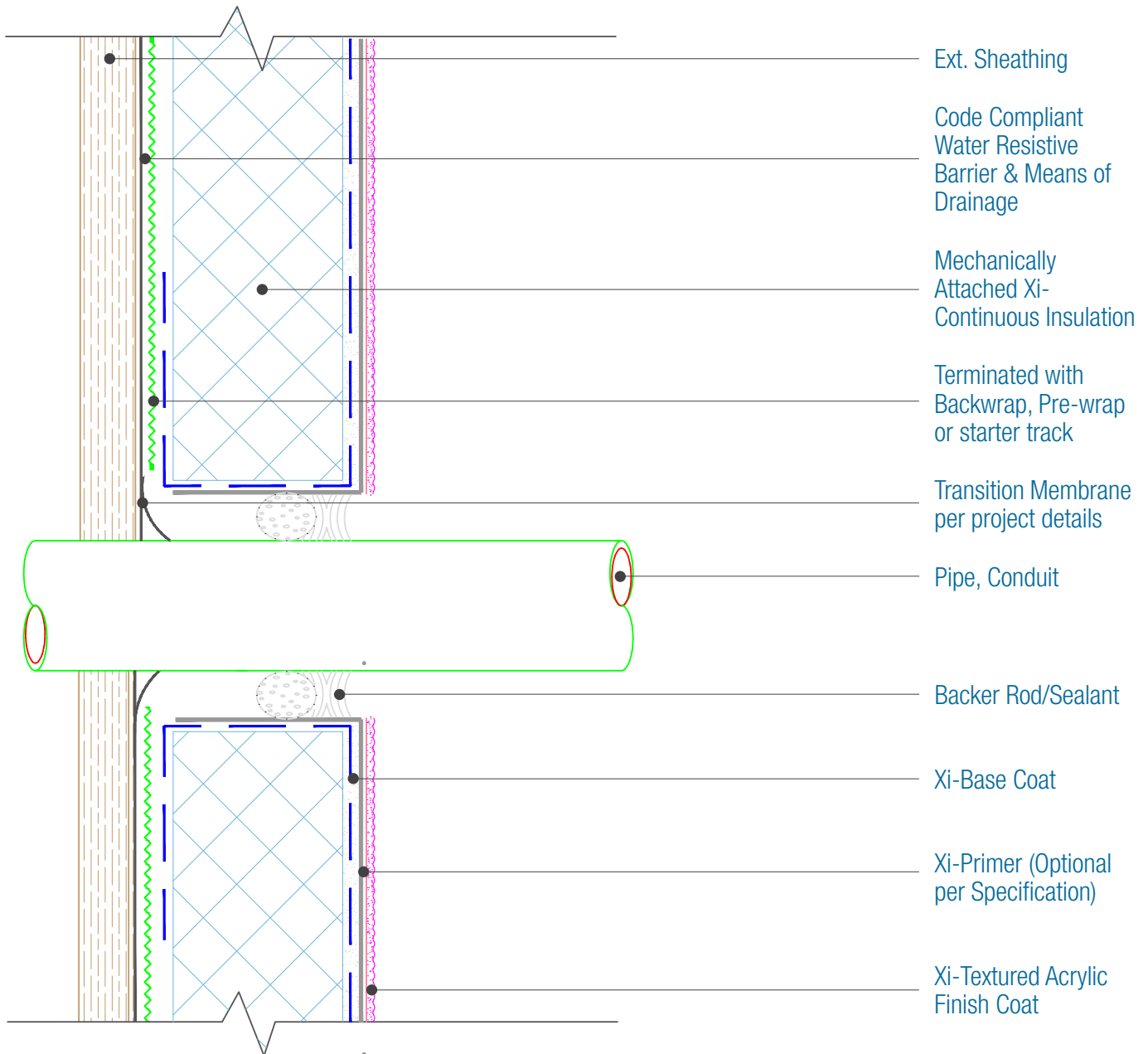
DISCLAIMER: FACADESXI details are recommendations that should be used for guidance only. There may be equivalent means of installation that are not shown in FACADESXI assembly details. All FACADESXI products shall be installed in accordance with FACADESXI product datasheets and all applicable building codes and industry standard practices. The design, engineering and final details incorporating any FACADESXI product are the sole responsibility of the project design professional. FACADESXI is not responsible for determining the acceptability and/or applicability of any FACADESXI product or detail for any specific project or condition. FACADESXI disclaims all liability for improper installation, workmanship, or design by a third-party. EXCEPT FOR ANY EXPRESS REPRESENTATIONS AND WARRANTIES BY FACADESXI, ALL IMPLIED WARRANTIES OF ANY KIND, INCLUDING BUT NOT LIMITED TO WARRANTIES OF MERCHANTABILITY OR FITNESS FOR A PARTICULAR PURPOSE OR COMPLIANCE WITH LAWS OR GOVERNMENT RULES OR REGULATIONS APPLICABLE TO THE PROJECT, ARE HEREBY DISCLAIMED. FACADESXI's website should always be consulted for the latest version of any details and/or product information. Contact FACADESXI for any technical assistance.



15262 Capital Port
San Antonio, TX 78249
1-833-899-0787
facadesxi.com

Xi-Fastened Pipe/Conduit Penetration

Date: 06-15-2021 | Detail: XIF.V.1 v1



NOTES:

1. For full assembly options, materials and placement of materials, refer to the specific FACADESXI System specifications.
2. Pipe should be installed prior to the Cladding and the Water/air barrier transition membrane wrapped onto the pipe to create a water/air tight seal.

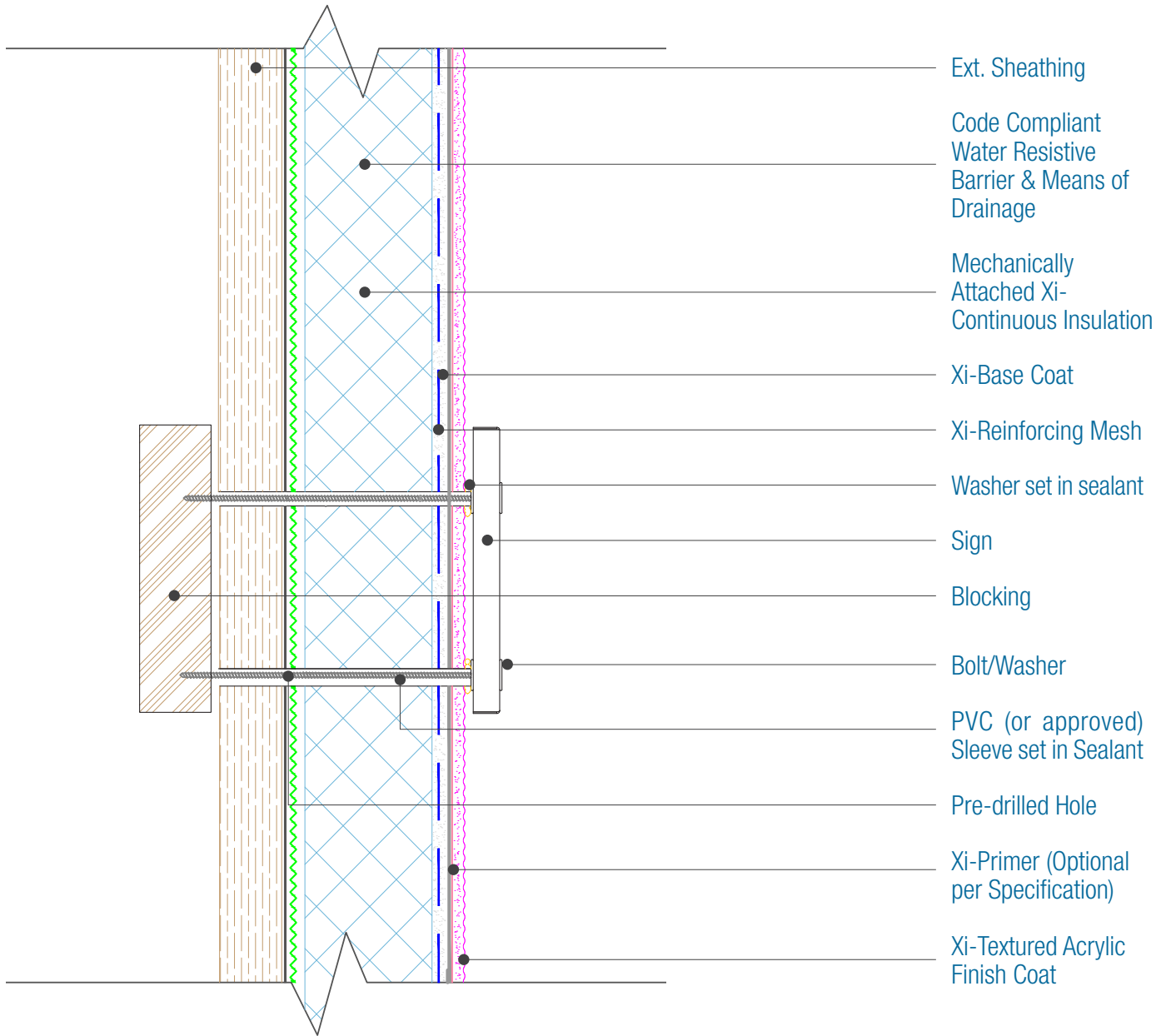
DISCLAIMER: FACADESXI details are recommendations that should be used for guidance only. There may be equivalent means of installation that are not shown in FACADESXI assembly details. All FACADESXI products shall be installed in accordance with FACADESXI product datasheets and all applicable building codes and industry standard practices. The design, engineering and final details incorporating any FACADESXI product are the sole responsibility of the project design professional. FACADESXI is not responsible for determining the acceptability and/or applicability of any FACADESXI product or detail for any specific project or condition. FACADESXI disclaims all liability for improper installation, workmanship, or design by a third-party. EXCEPT FOR ANY EXPRESS REPRESENTATIONS AND WARRANTIES BY FACADESXI, ALL IMPLIED WARRANTIES OF ANY KIND, INCLUDING BUT NOT LIMITED TO WARRANTIES OF MERCHANTABILITY OR FITNESS FOR A PARTICULAR PURPOSE OR COMPLIANCE WITH LAWS OR GOVERNMENT RULES OR REGULATIONS APPLICABLE TO THE PROJECT, ARE HEREBY DISCLAIMED. FACADESXI's website should always be consulted for the latest version of any details and/or product information. Contact FACADESXI for any technical assistance.



15262 Capital Port
 San Antonio, TX 78249
 1-800-611-6602
 facadesxi.com

Xi-Fastened Sign Attachment

Date: 06-15-2021 | Detail: XIF.V.2 v1



NOTES:

1. For full assembly options, materials and placement of materials, refer to the specific FACADESXI System specifications.
2. System must be sealed at all penetrations. It is recommended to install penetrations before the Cladding.

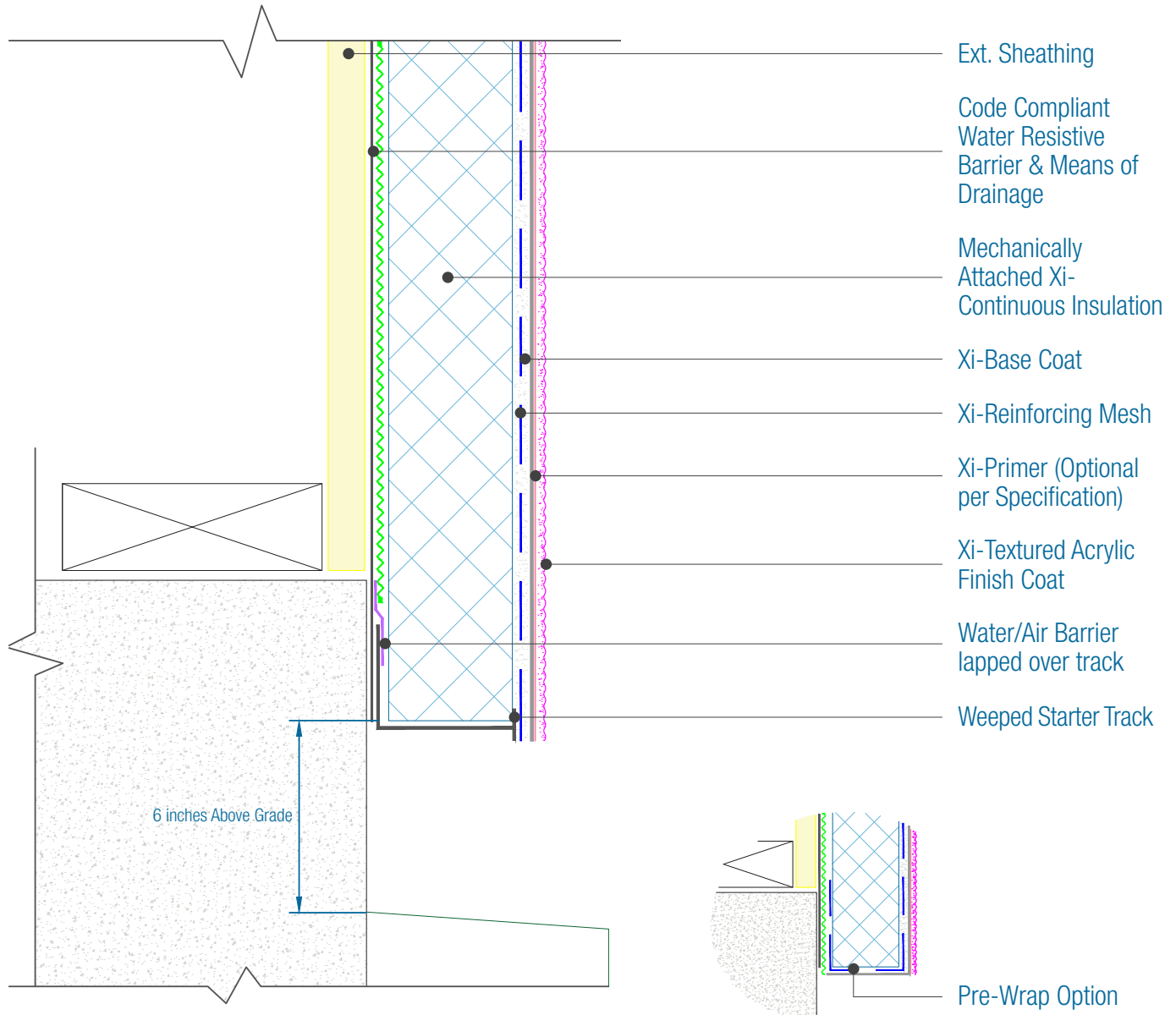
DISCLAIMER: FACADESXI details are recommendations that should be used for guidance only. There may be equivalent means of installation that are not shown in FACADESXI assembly details. All FACADESXI products shall be installed in accordance with FACADESXI product datasheets and all applicable building codes and industry standard practices. The design, engineering and final details incorporating any FACADESXI product are the sole responsibility of the project design professional. FACADESXI is not responsible for determining the acceptability and/or applicability of any FACADESXI product or detail for any specific project or condition. FACADESXI disclaims all liability for improper installation, workmanship, or design by a third-party. EXCEPT FOR ANY EXPRESS REPRESENTATIONS AND WARRANTIES BY FACADESXI, ALL IMPLIED WARRANTIES OF ANY KIND, INCLUDING BUT NOT LIMITED TO WARRANTIES OF MERCHANTABILITY OR FITNESS FOR A PARTICULAR PURPOSE OR COMPLIANCE WITH LAWS OR GOVERNMENT RULES OR REGULATIONS APPLICABLE TO THE PROJECT, ARE HEREBY DISCLAIMED. FACADESXI's website should always be consulted for the latest version of any details and/or product information. Contact FACADESXI for any technical assistance.



15262 Capital Port
San Antonio, TX 78249
1-833-899-0787
facadesxi.com

Xi-Fastened Termination at Grade

Date. 06-15-2021 | Detail. XIF.VI.1 v1



NOTES:

1. Water Resistant Membrane, transition and accessory products are by others and installation can be found in the project specifications, and product datasheets
2. Drainage must be continuous either behind the accessory or into a weeped track.
3. Assembly Termination: Minimum 6" above earth or as required by code.
4. High or Ultra High impact resistance is recommended on wall areas subjected to pedestrian traffic or other impact exposure and up to a minimum height of 6 feet above grade.

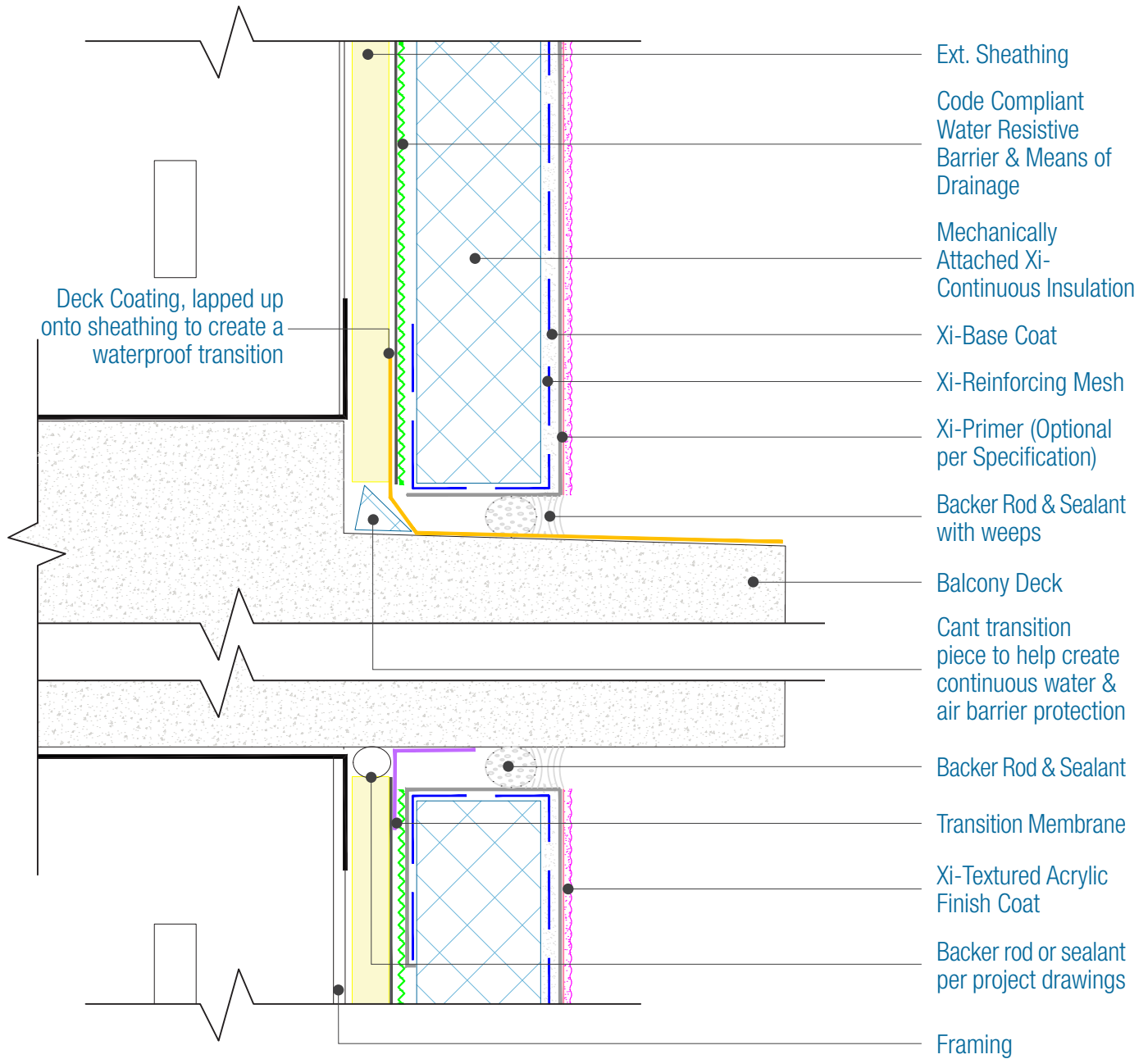
DISCLAIMER: FACADESXI details are recommendations that should be used for guidance only. There may be equivalent means of installation that are not shown in FACADESXI assembly details. All FACADESXI products shall be installed in accordance with FACADESXI product datasheets and all applicable building codes and industry standard practices. The design, engineering and final details incorporating any FACADESXI product are the sole responsibility of the project design professional. FACADESXI is not responsible for determining the acceptability and/or applicability of any FACADESXI product or detail for any specific project or condition. FACADESXI disclaims all liability for improper installation, workmanship, or design by a third-party. EXCEPT FOR ANY EXPRESS REPRESENTATIONS AND WARRANTIES BY FACADESXI, ALL IMPLIED WARRANTIES OF ANY KIND, INCLUDING BUT NOT LIMITED TO WARRANTIES OF MERCHANTABILITY OR FITNESS FOR A PARTICULAR PURPOSE OR COMPLIANCE WITH LAWS OR GOVERNMENT RULES OR REGULATIONS APPLICABLE TO THE PROJECT, ARE HEREBY DISCLAIMED. FACADESXI's website should always be consulted for the latest version of any details and/or product information. Contact FACADESXI for any technical assistance.



15262 Capital Port
 San Antonio, TX 78249
 1-833-899-0787
 facadesxi.com

Xi-Fastened Termination at Balcony

Date. 06-15-2021 | Detail. XIF.VI.2 v1



NOTES:

1. Water Resistant Barrier, transition and accessory products are by others and installation can be found in the project specifications, and product datasheets.
2. Drainage must be provided behind backwrap by either using a drainage transition or pre-wrap insulation boards.
3. High or Ultra High impact resistance is recommended on wall areas subjected to pedestrian traffic or other exposure to impact.
4. Non FXI products are shown for the clarity of the FXI products only.

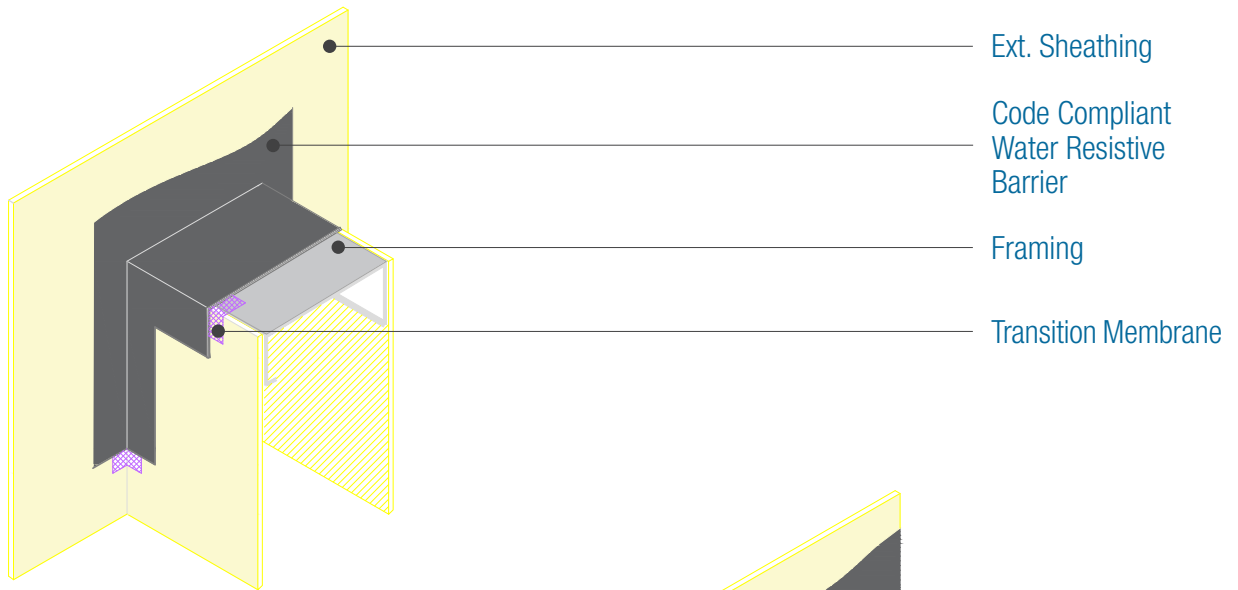
DISCLAIMER: FACADESXi details are recommendations that should be used for guidance only. There may be equivalent means of installation that are not shown in FACADESXi assembly details. All FACADESXi products shall be installed in accordance with FACADESXi product datasheets and all applicable building codes and industry standard practices. The design, engineering and final details incorporating any FACADESXi product are the sole responsibility of the project design professional. FACADESXi is not responsible for determining the acceptability and/or applicability of any FACADESXi product or detail for any specific project or condition. FACADESXi disclaims all liability for improper installation, workmanship, or design by a third-party. EXCEPT FOR ANY EXPRESS REPRESENTATIONS AND WARRANTIES BY FACADESXi, ALL IMPLIED WARRANTIES OF ANY KIND, INCLUDING BUT NOT LIMITED TO WARRANTIES OF MERCHANTABILITY OR FITNESS FOR A PARTICULAR PURPOSE OR COMPLIANCE WITH LAWS OR GOVERNMENT RULES OR REGULATIONS APPLICABLE TO THE PROJECT, ARE HEREBY DISCLAIMED. FACADESXi's website should always be consulted for the latest version of any details and/or product information. Contact FACADESXi for any technical assistance.



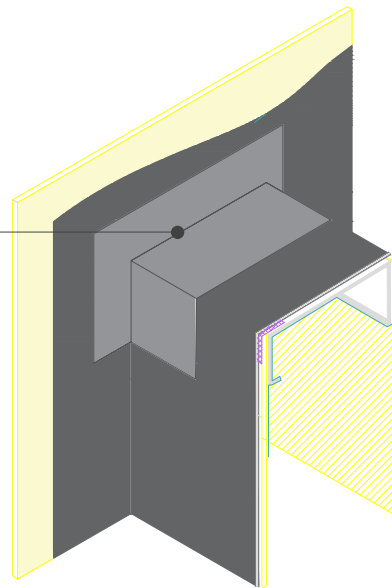
15262 Capital Port
San Antonio, TX 78249
1-833-899-0787
facadesxi.com

Xi-Fastened Saddle Flashing

Date. 06-15-2021 | Detail. XIF.VII.3 v1



Saddle Flashing



NOTE: After Saddle Flashing is installed, EIFS is installed per Roof Flashing, Parapet Flashing, Termination into dissimilar Material and Drainage Details.

NOTES:

1. Water resistive barrier and accessory materials are by others and shown to clarify the installation of the EIFS only.
2. Responsibility of the flashing is not necessarily that of the plastering contractor and should be denoted in the contract documents.

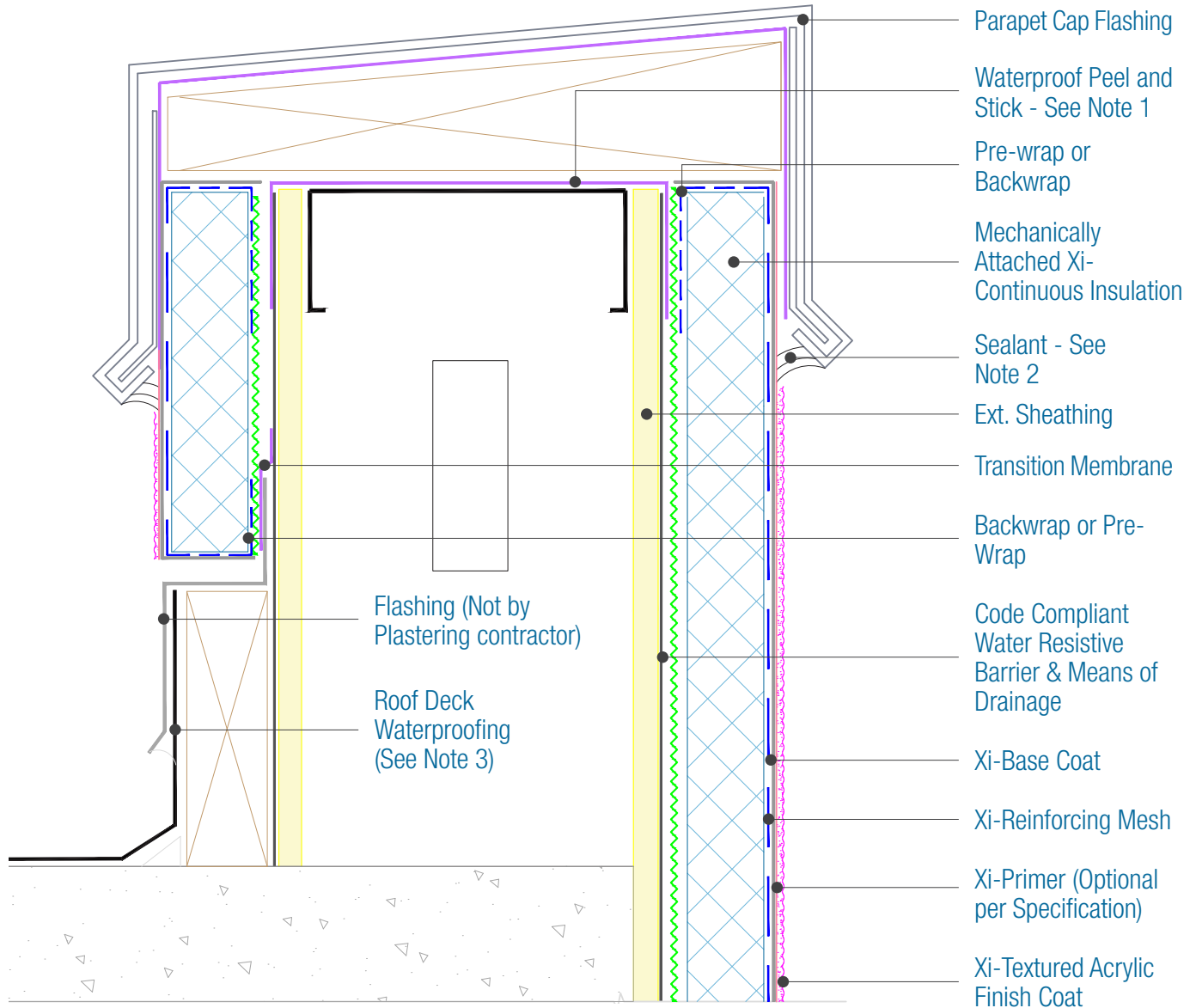
DISCLAIMER: FACADESXI details are recommendations that should be used for guidance only. There may be equivalent means of installation that are not shown in FACADESXI assembly details. All FACADESXI products shall be installed in accordance with FACADESXI product datasheets and all applicable building codes and industry standard practices. The design, engineering and final details incorporating any FACADESXI product are the sole responsibility of the project design professional. FACADESXI is not responsible for determining the acceptability and/or applicability of any FACADESXI product or detail for any specific project or condition. FACADESXI disclaims all liability for improper installation, workmanship, or design by a third-party. EXCEPT FOR ANY EXPRESS REPRESENTATIONS AND WARRANTIES BY FACADESXI, ALL IMPLIED WARRANTIES OF ANY KIND, INCLUDING BUT NOT LIMITED TO WARRANTIES OF MERCHANTABILITY OR FITNESS FOR A PARTICULAR PURPOSE OR COMPLIANCE WITH LAWS OR GOVERNMENT RULES OR REGULATIONS APPLICABLE TO THE PROJECT, ARE HEREBY DISCLAIMED. FACADESXI's website should always be consulted for the latest version of any details and/or product information. Contact FACADESXI for any technical assistance.



15262 Capital Port
 San Antonio, TX 78249
 1-833-899-0787
 facadesxi.com

Xi-Fastened Parapet

Date. 06-15-2021 | Detail. XIF.VII.1 v1



NOTES:

1. Water resistant barrier is by others.
2. Sealant should be omitted if the Parapet assembly must drain at this location.
3. Flashing should extend 2" minimum onto the face of the EIFS.
4. Responsibility of the flashing is not necessarily that of the plastering contractor and should be denoted in the contract documents.

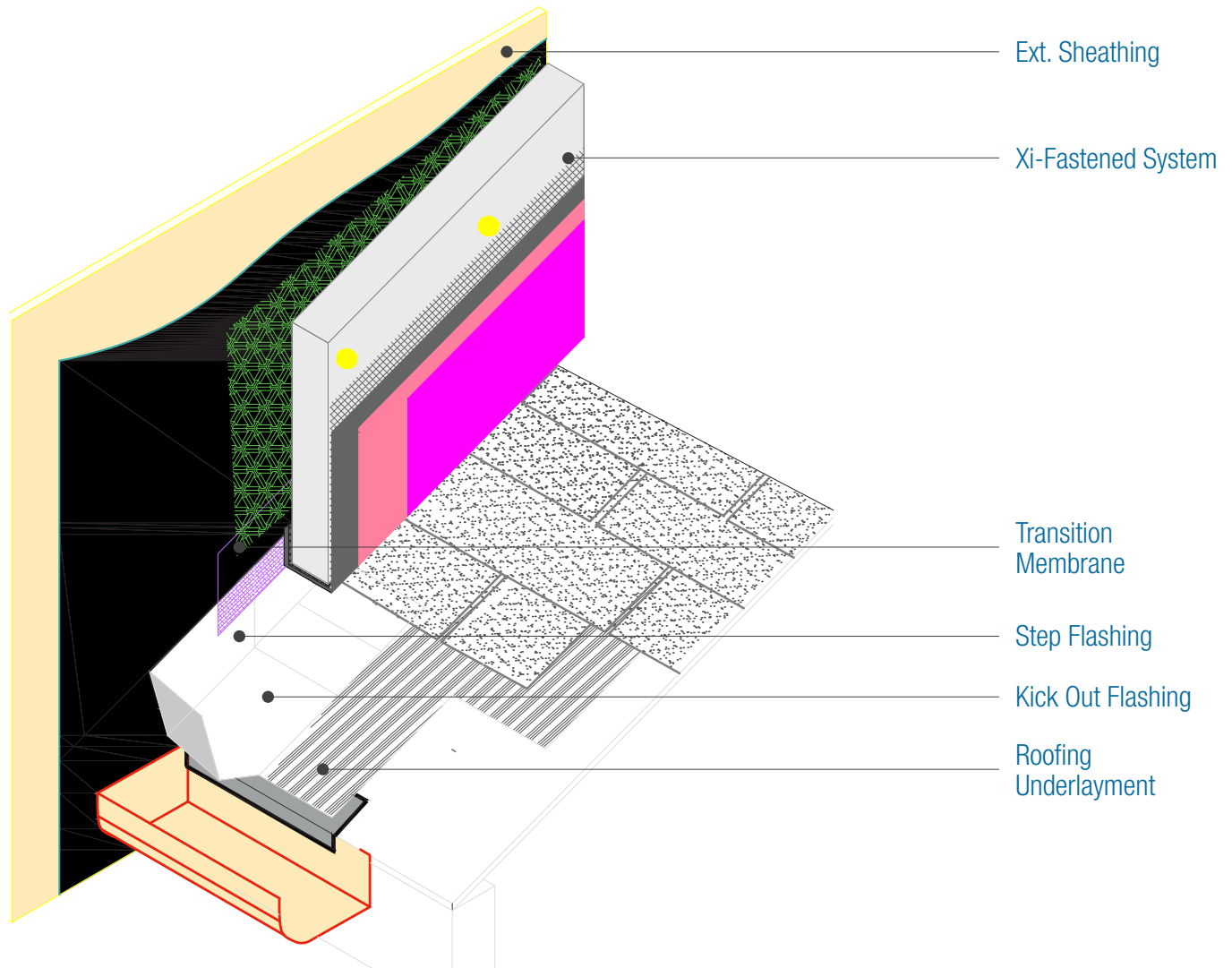
DISCLAIMER: FACADESXI details are recommendations that should be used for guidance only. There may be equivalent means of installation that are not shown in FACADESXI assembly details. All FACADESXI products shall be installed in accordance with FACADESXI product datasheets and all applicable building codes and industry standard practices. The design, engineering and final details incorporating any FACADESXI product are the sole responsibility of the project design professional. FACADESXI is not responsible for determining the acceptability and/or applicability of any FACADESXI product or detail for any specific project or condition. FACADESXI disclaims all liability for improper installation, workmanship, or design by a third-party. EXCEPT FOR ANY EXPRESS REPRESENTATIONS AND WARRANTIES BY FACADESXI, ALL IMPLIED WARRANTIES OF ANY KIND, INCLUDING BUT NOT LIMITED TO WARRANTIES OF MERCHANTABILITY OR FITNESS FOR A PARTICULAR PURPOSE OR COMPLIANCE WITH LAWS OR GOVERNMENT RULES OR REGULATIONS APPLICABLE TO THE PROJECT, ARE HEREBY DISCLAIMED. FACADESXI's website should always be consulted for the latest version of any details and/or product information. Contact FACADESXI for any technical assistance.



15262 Capital Port
San Antonio, TX 78249
1-833-899-0787
facadesxi.com

Xi-Fastened Kick Out Flashing

Date. 06-15-2021 | Detail. XIF.VII.2 v1



NOTES:

1. Kick out Flashing must be installed with watertight seams, be corrosion resistant, extend 1" beyond the EIFS.
2. Means of drainage must be provided at roof termination.
3. Terminate System 2 inches above roof.
4. Step Flashing must be 2 inches behind the system and 4 inches in height.
5. Roof Underlayment should extend up onto the wall under the flashing.
6. Metal Flashing is installed and designed by others, is not necessarily the responsibility of the plastering contractor, and should be denoted in the contract documents.

DISCLAIMER: FACADESXI details are recommendations that should be used for guidance only. There may be equivalent means of installation that are not shown in FACADESXI assembly details. All FACADESXI products shall be installed in accordance with FACADESXI product datasheets and all applicable building codes and industry standard practices. The design, engineering and final details incorporating any FACADESXI product are the sole responsibility of the project design professional. FACADESXI is not responsible for determining the acceptability and/or applicability of any FACADESXI product or detail for any specific project or condition. FACADESXI disclaims all liability for improper installation, workmanship, or design by a third-party. EXCEPT FOR ANY EXPRESS REPRESENTATIONS AND WARRANTIES BY FACADESXI, ALL IMPLIED WARRANTIES OF ANY KIND, INCLUDING BUT NOT LIMITED TO WARRANTIES OF MERCHANTABILITY OR FITNESS FOR A PARTICULAR PURPOSE OR COMPLIANCE WITH LAWS OR GOVERNMENT RULES OR REGULATIONS APPLICABLE TO THE PROJECT, ARE HEREBY DISCLAIMED. FACADESXI's website should always be consulted for the latest version of any details and/or product information. Contact FACADESXI for any technical assistance.

FACADESXi